

Since 1959



Cranes, in all the languages of the world

Serie 37 SP



LA FORZA DELLA QUALITÀ THE POWER OF QUALITY
LA FORCE DE LA QUALITE DIE KRAFT DER QUALITÄT LA FUERZA DE LA CALIDAD

Le gru PM Serie 37 SP, progettate secondo evoluti standard di riferimento, utilizzano nuovi acciai ad alta resistenza, rispondendo così a molte esigenze di livello superiore.

PM Serie 37 SP propone: prestazioni di carico ottimali in ogni posizione di lavoro (sistema a doppie bielle e LC), fino a 7 sfilì idraulici (22,60 m), bracci stabilizzatori XL a 6720 mm.

The cranes PM Serie 37 SP, developed according to high technological standard, use new high resistance steel, able to answer to upgraded demanding performances.

PM Serie 37 SP propose: loading capacities optimized in any working position (twin links system and LC), up to 7 hydraulic extensions (22,6 m.), XL stabilizer booms to 6720 mm.

Les grues PM Série 37 SP, projetées selon les normes les plus avancées, utilisent des nouveaux aciers à haute résistance, ce qui les rend appropriées pour des exigences de niveau supérieur.

La PM série 37 SP propose: d' excellentes performances de levage en toute position de travail (système à doubles bielles et LC), flèche jusqu'à 7 extensions hydrauliques (22m 60), bras stabilisateurs XL de 6720 mm.

Das Kranmodell Serie 37 SP, entwickelt entsprechend den neuesten technischen Standards, werden aus Feinkornstaehle der letzten Generation produziert und sind somit in der Lage hoehere Leistungen zu erbringen.

PM Serie 37 SP verfuegt ueber einen optimales Leistungsverhaeltniss in jeder Konfiguration (Doppelkniehebelsystem und LC Ausfuehrungen), max. hydraulische Reichweite von 22,6 mt (7 hydraulische Ausschuebe), und einer verbreiteten Abstuetzung von 6720 mm.

Las grúas de la Serie PM 37 SP estudiadas y proyectadas según las normas mas modernas, utilizan nuevos aceros de alta resistencia para encontrar todas exigencias a nivel superior.

La Serie 37 SP ofrece: prestaciones de carga optimas en todas configuraciones de trabajo (sistema con doble biela y LC), versión hasta 7 salidas hidráulicas (22,60 m), brazos estabilizadores largos de 6720 mm.

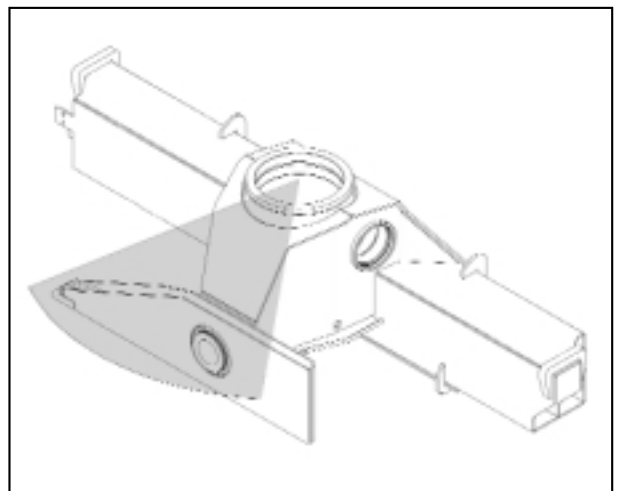
POSIZIONE DEL PUNTO MORTE DELLA ROTAZIONE (GRU STANDARD)

Position du point mort de rotation (grues standard)

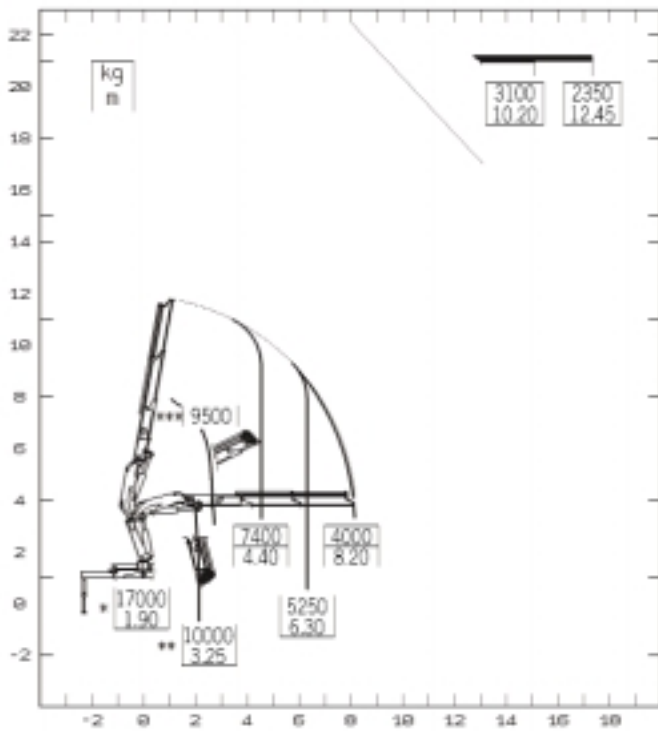
Slewing dead point position (standard cranes)

Schwenktotpunktstellung (standard krane)

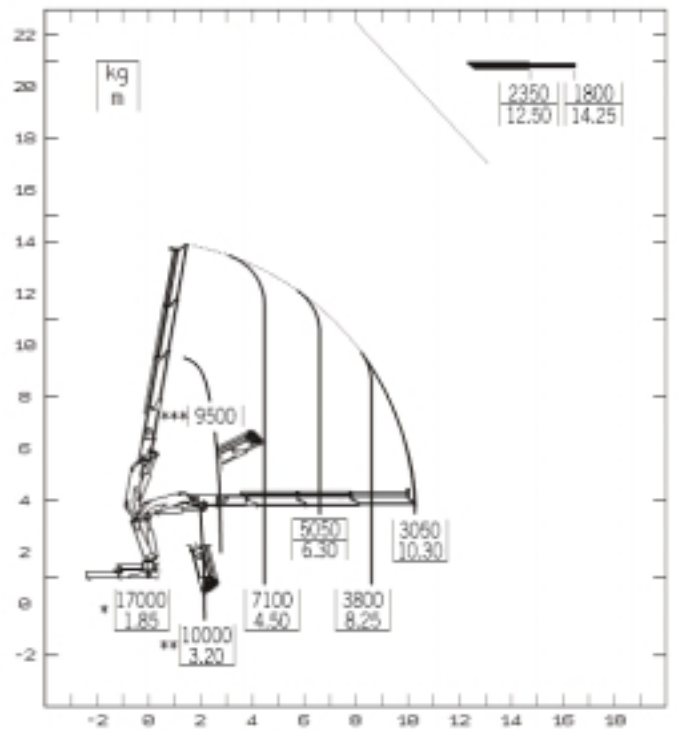
Lado de paro del sistema de giro de la grua (grua estandard)



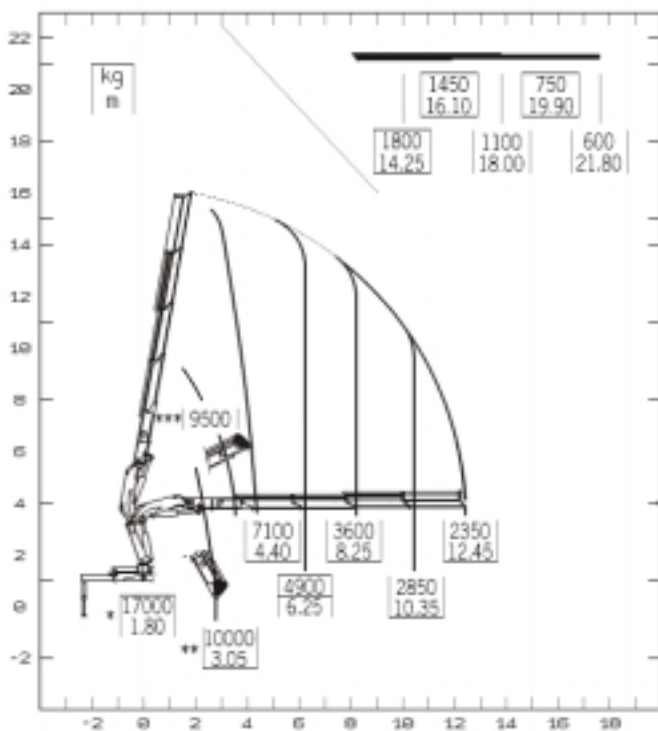
37022



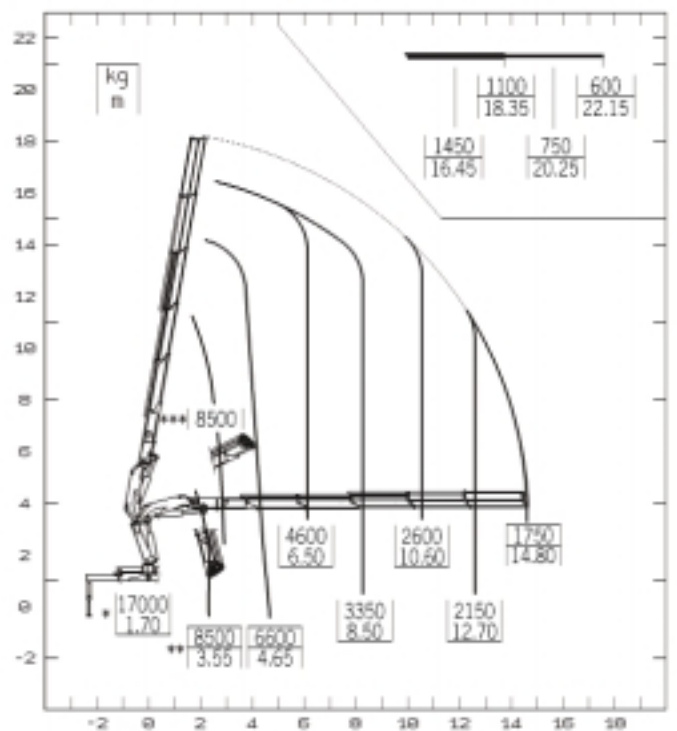
37023



37024



37025



* PORTATA MASSIMA
NOMINALE AL GANCIO FISSO
** PORTATA MASSIMA
AL GANCIO MOBILE
*** PORTATA MASSIMA
PASSANTE PER L'ORIZZONTALE

* MAX. NOMINAL CAPACITY
WITH FIXED HOOK
** MAX. CAPACITY WITH
MOBILE HOOK
*** MAX. CAPACITY FROM
HORIZONTAL TO VERTICAL

* CAPACITE MAXI NOMINALE
AU CROCHET FIXE
** CAPACITE MAXI NOMINALE
AU CROCHET MOBILE
*** CAPACITE MAXI PASSANT
PAR L'HORIZONTALE

* MAX. NENNTRAGKRAFT
AN DER INNEREN
HAKENBEFESTIGUNG
** MAX. TRAGKRAFT
*** MAX. TRAGKRAFT VON
HORIZONTAL BIS ZU VERTIKAL

* CAPACIDAD MÁXIMA EN EL
GANCHO FIJO
** CAPACIDAD MÁXIMA EN
EL GANCHO MÓVIL
*** CAPACIDAD MÁXIMA
EN POSICIÓN VERTICAL

N.B.: LE PRESTAZIONI INDICATE
SI OTTENGONO CON BRACCIO
PRINCIPALE A 15°

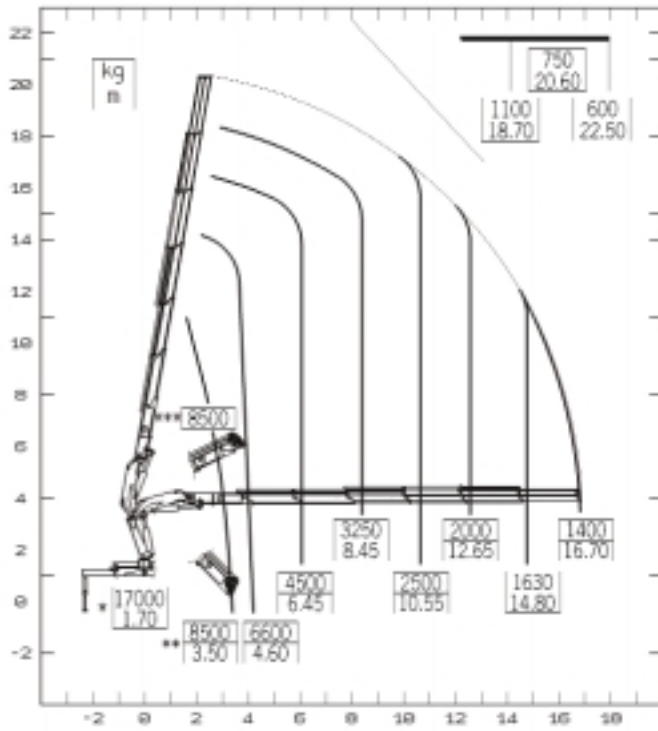
N.B.: THE STATED PERFORMANCES
CAN BE OBTAINED WITH 15°
INCLINATED MAIN BOOM

N.B.: LES PERFORMANCES
INDIQUEES S'OBTIENNENT AVEC
1ER BRAS INCLINE A 15°

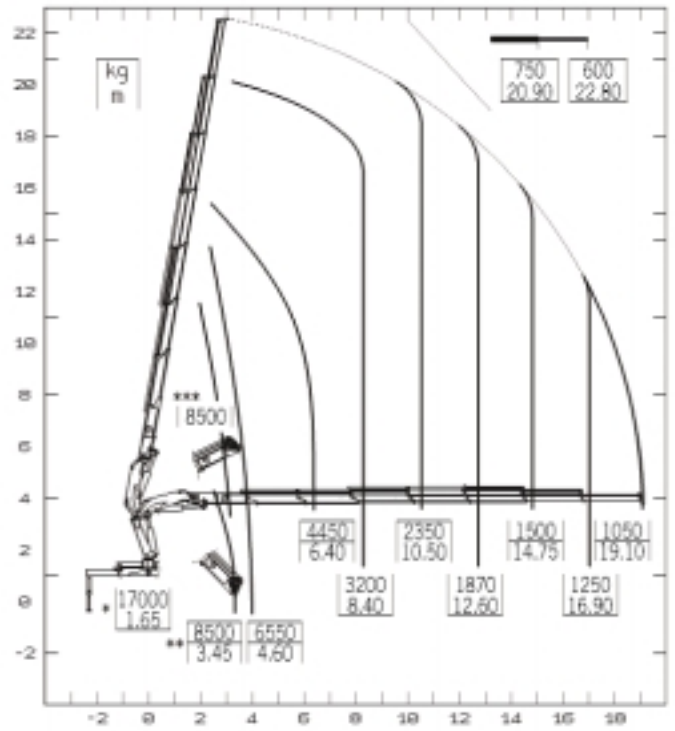
ANMERKUNG: DIE ANGEGEBENEN
LEISTUNGEN WERDEN MIT 15°
GENEIGTEM HUBBRAHMEN
ERREICHT

N.B.: LAS PRESTACIONES
INDICADAS SE OBTIENEN CON
AEL BRAZO ARTICULADO A 15°

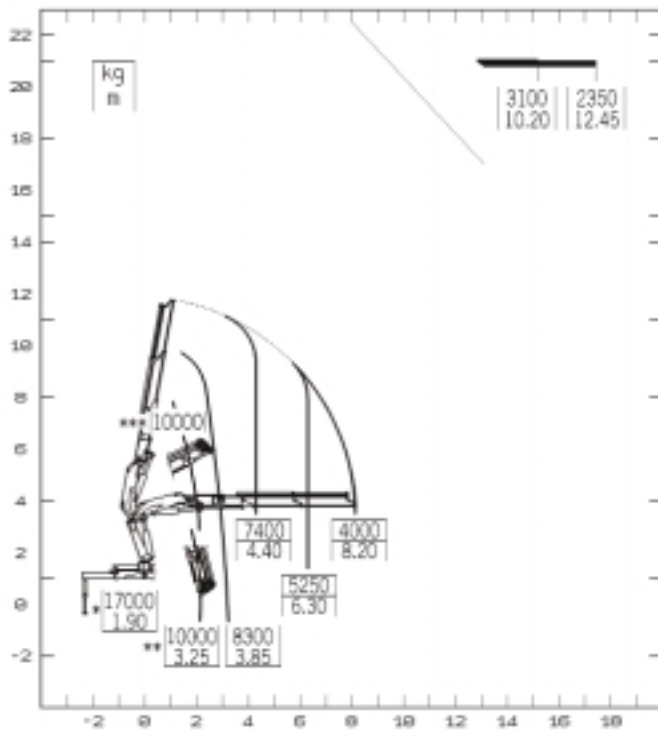
37026



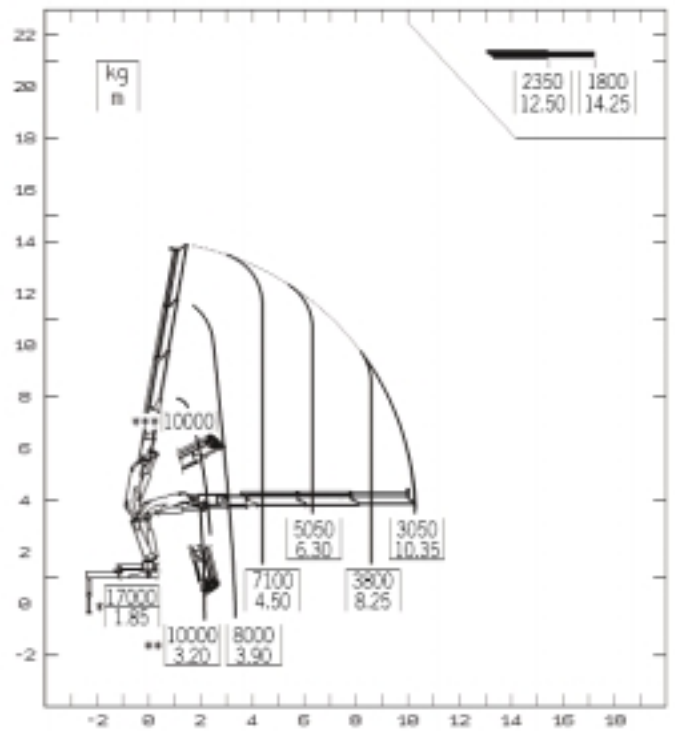
37027



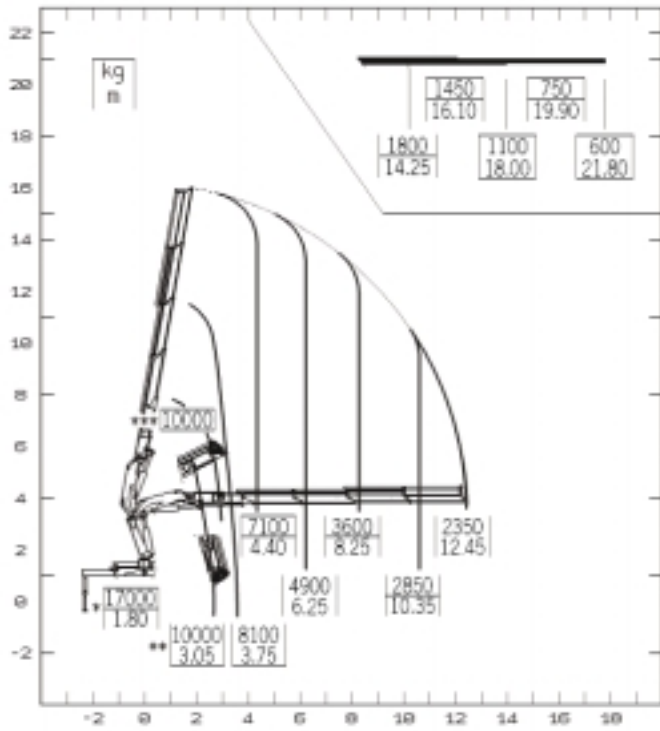
37022 LC



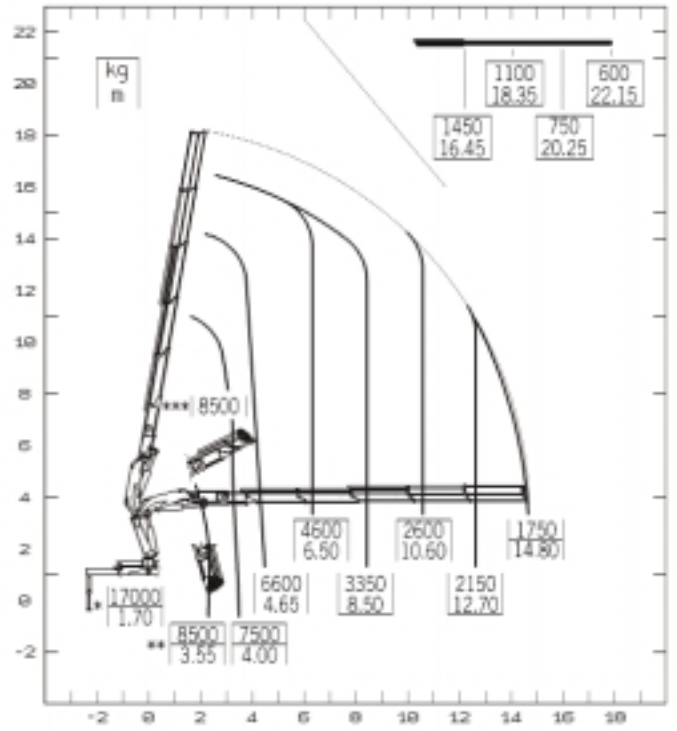
37023 LC



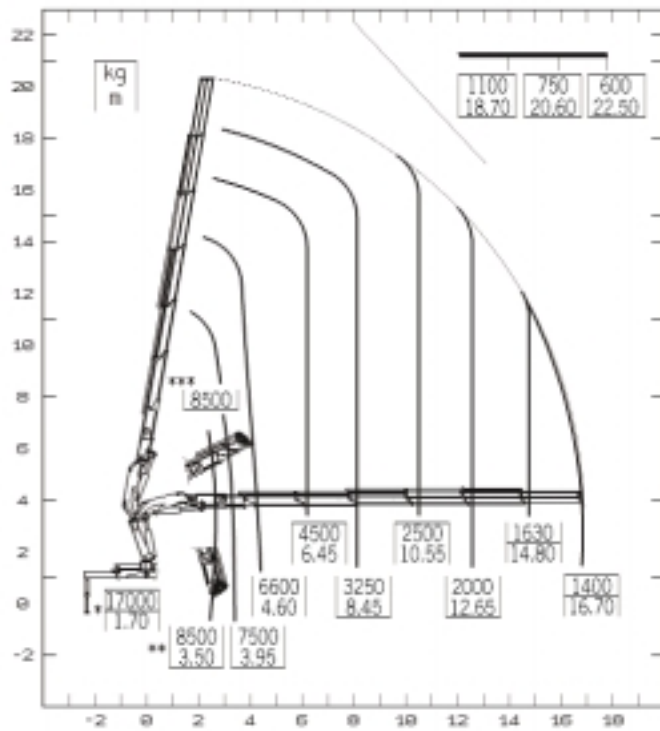
37024 LC



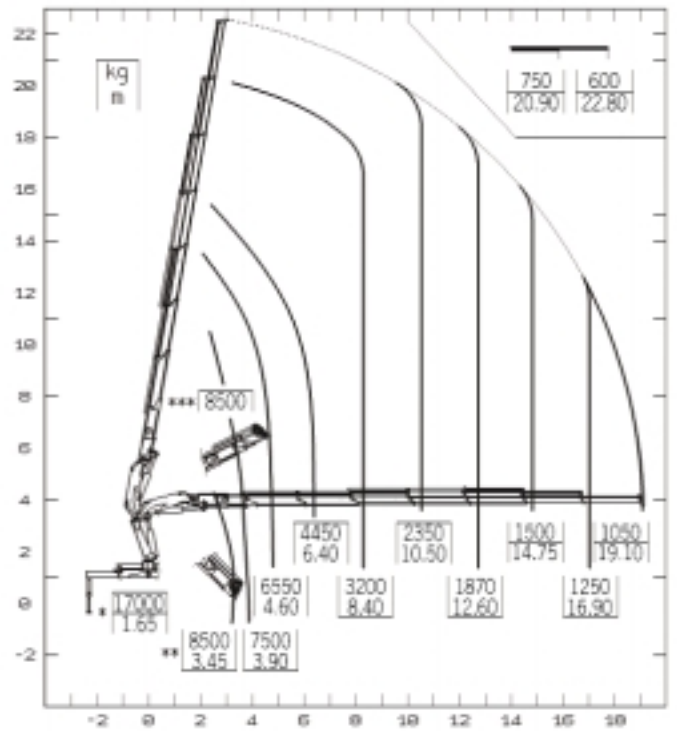
37025 LC



37026 LC

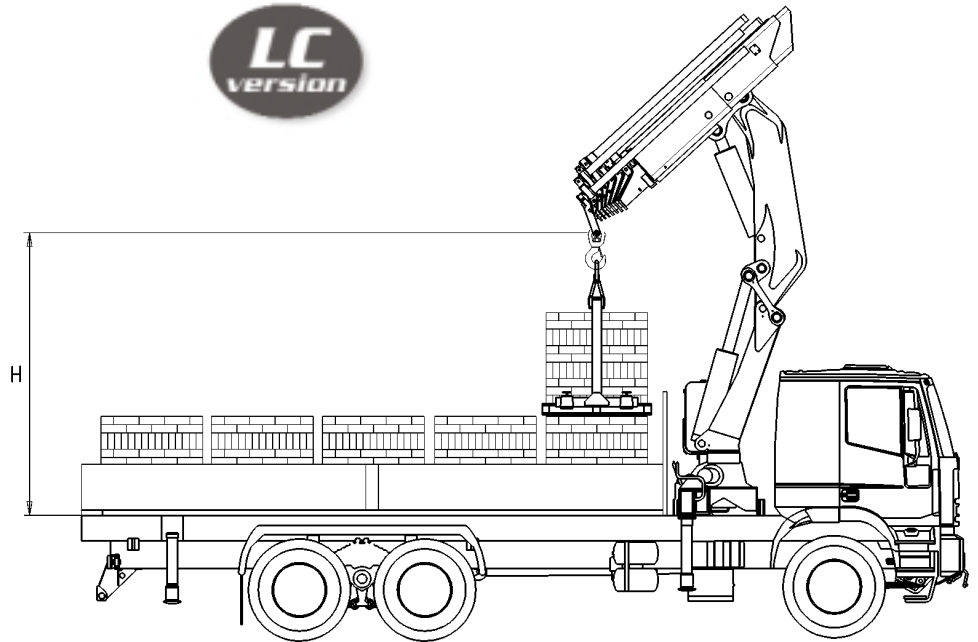


37027 LC





| Mod. | H (m) |
|----------|-------|
| 37022 LC | 3.52 |
| 37023 LC | 3.45 |
| 37024 LC | 3.38 |
| 37025 LC | 3.32 |
| 37026 LC | 3.28 |
| 37027 LC | 3.24 |



Gru PM, versione LC, con primo braccio retraibile idraulicamente, agevola le movimentazioni ingombranti e gravose a corto raggio, ottimizzando anche le posizioni di carico sotto colonna.

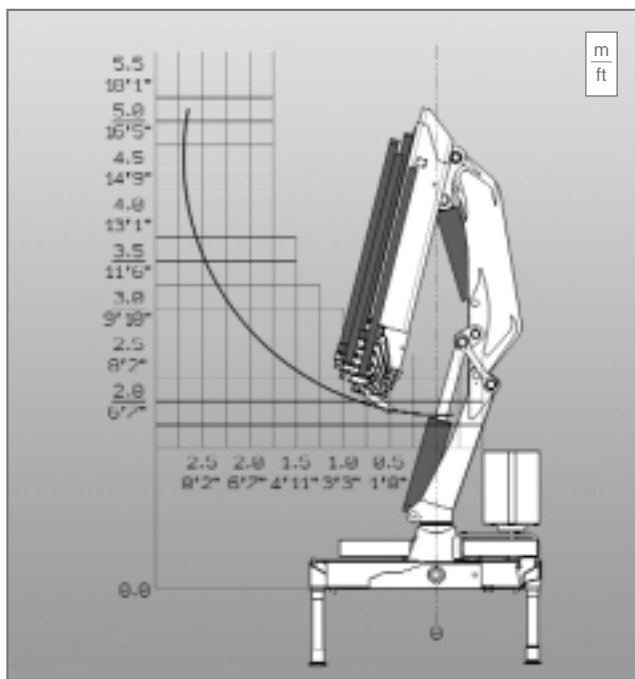
PM crane in LC version, with first hydraulic retractable boom, optimizes the load positioning close to the column, and makes easy the placement of heavy and bulky loads.

PM Ladekrane in CL Ausführung, der hydraulisch einfahrbare Erste Ausleger ermöglicht es sperrige Güter und große Lasten zu heben. Dies wird auch durch die hohe Hakenfreiheit ermöglicht.

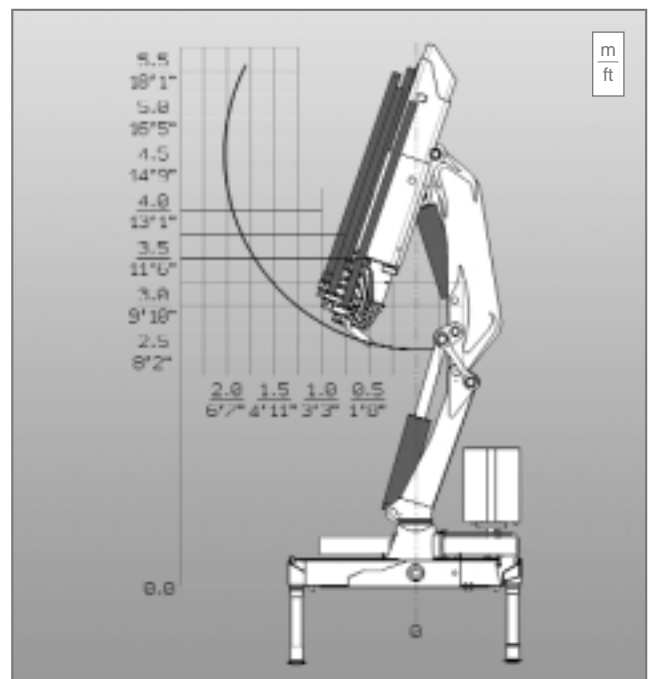
Grue PM, version LC, avec deuxième bras pouvant être raccourci hydrauliquement; cette caractéristique facilite le chargement de matériel lourd et encombrant en augmentant la hauteur disponible sous crochet et la capacité de soulèvement près de la colonne.

Grúas en versión LC, el primero brazo se recoge hidráulicamente, así que permite de elevar, mover y también colocar material pesado y de grande tamaño cerca de la columna.

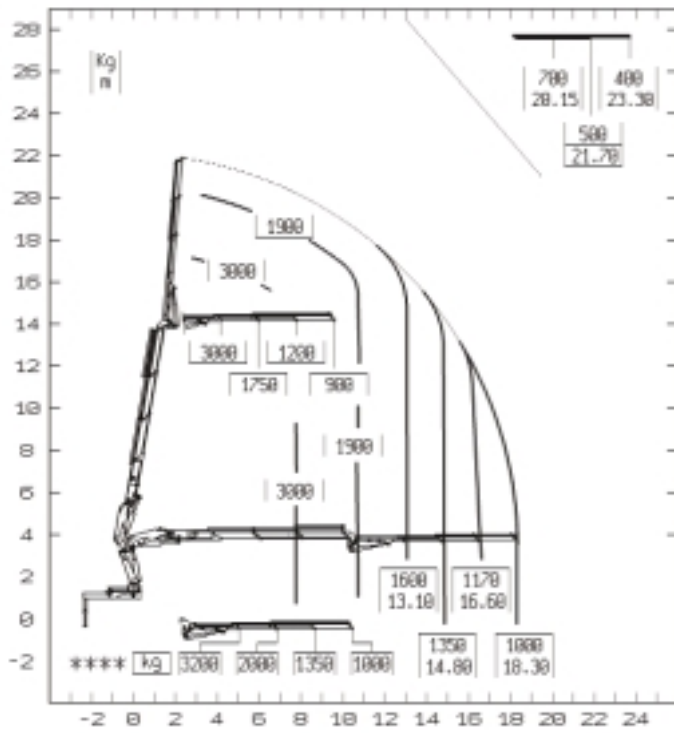
Serie 37



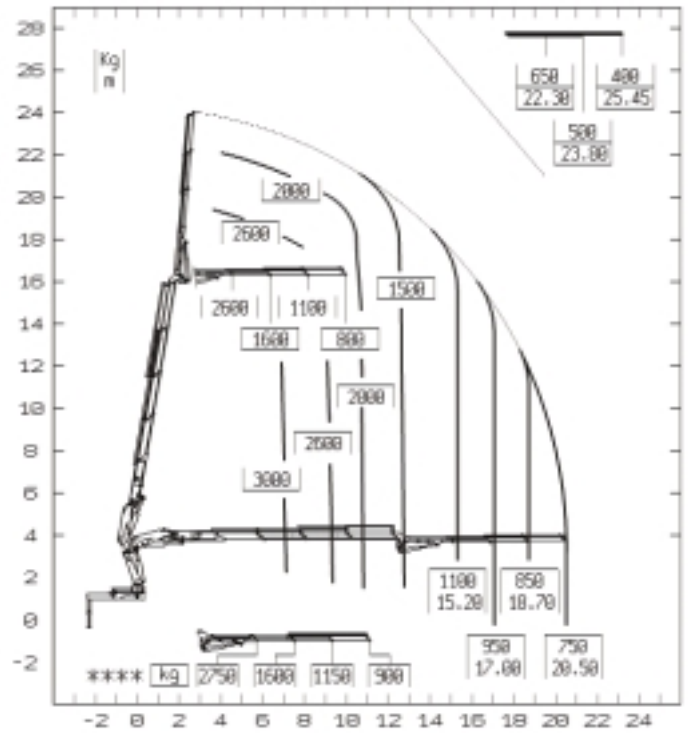
Serie 37 LC



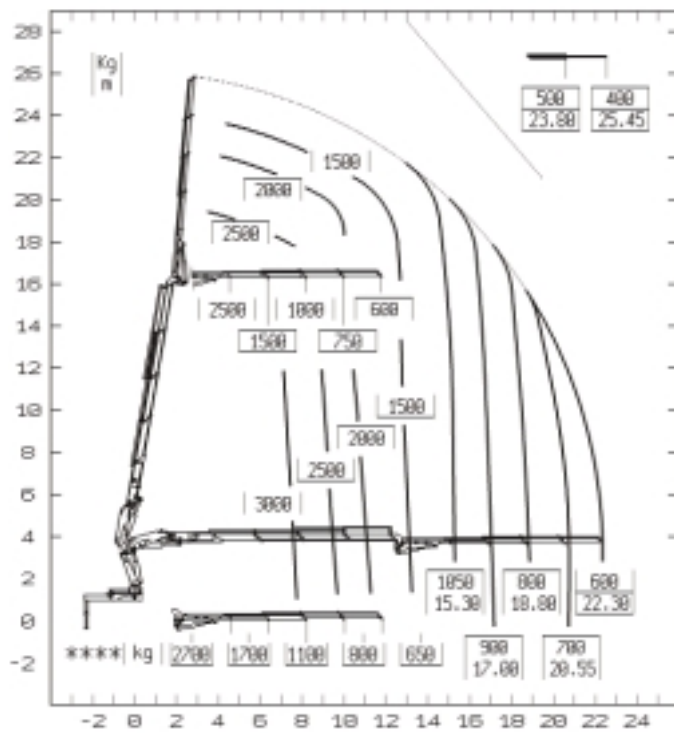
37023+J903



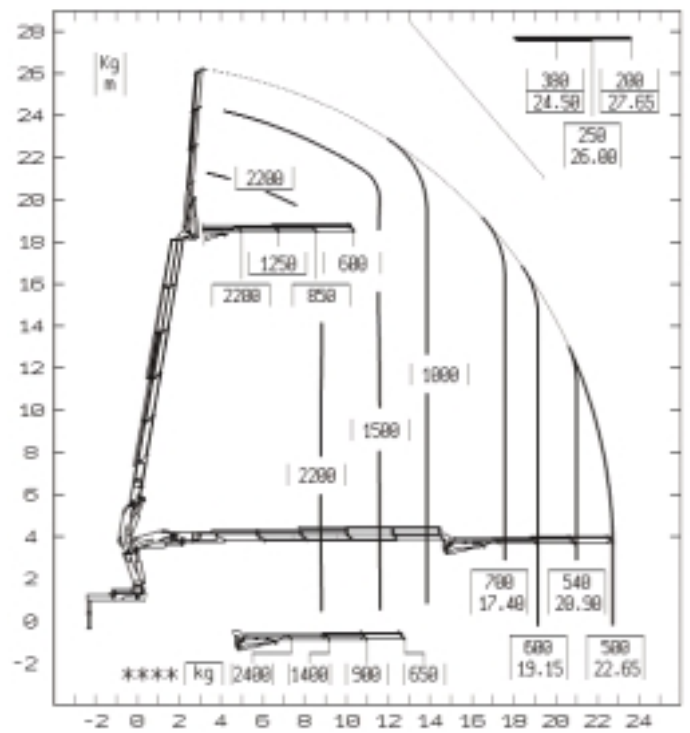
37024+J903



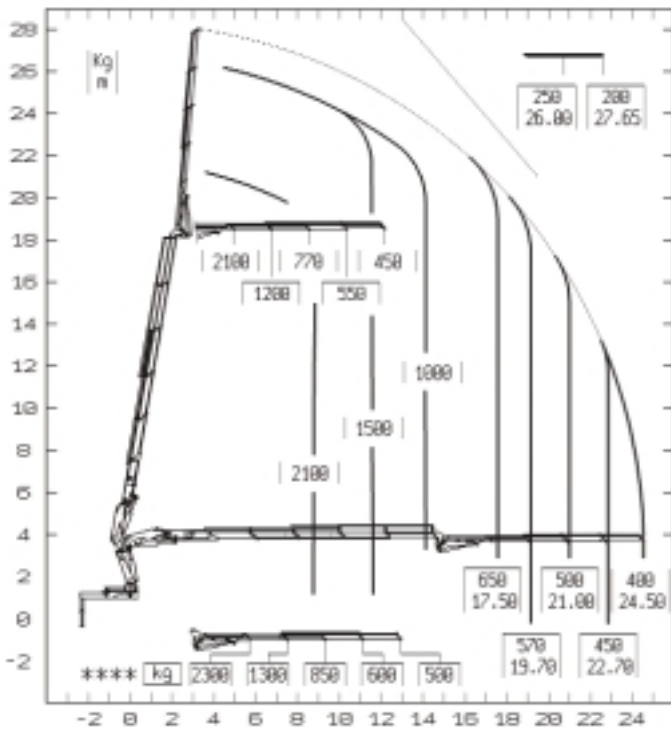
37024+J904



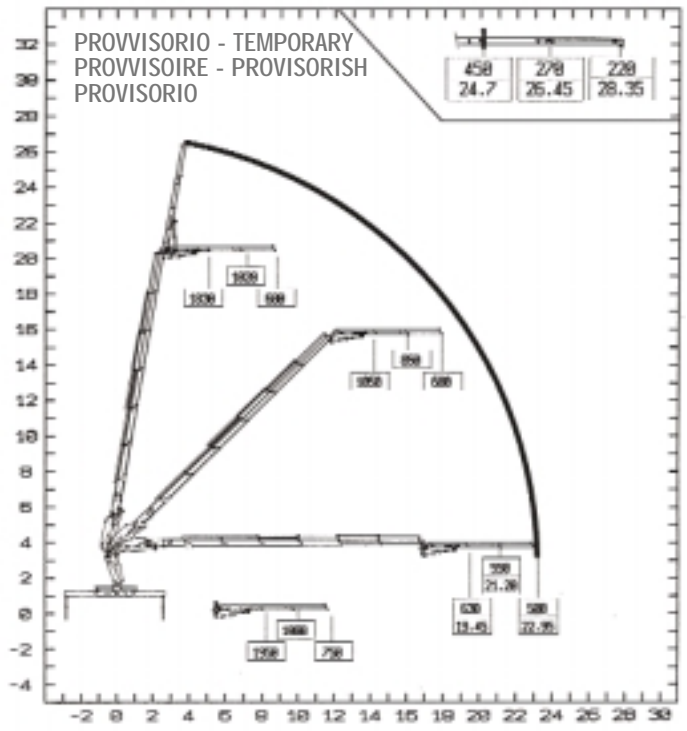
37025+J903



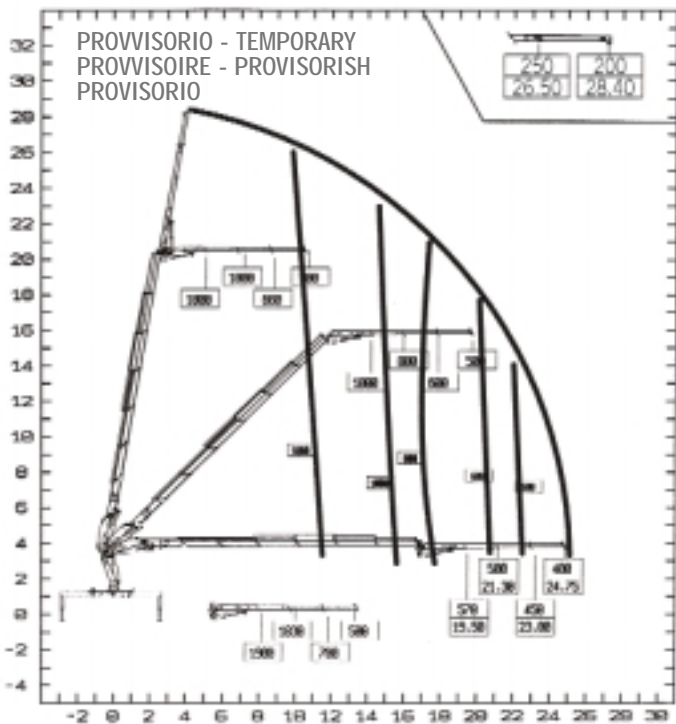
37025+J904



37026+J702



37026+J703



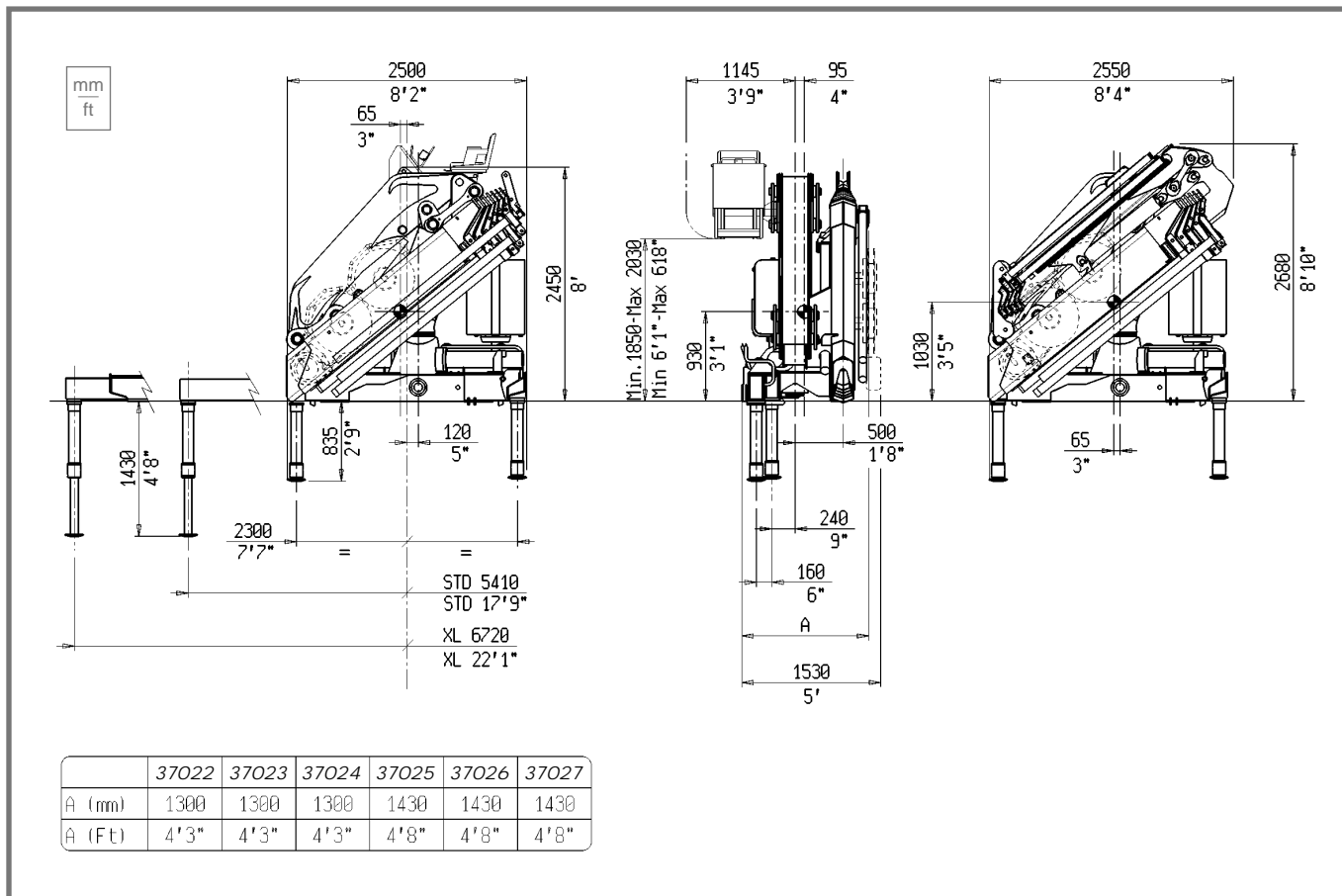
****PORTATE MASSIME DELL'ANTENNA IN ORIZZONTALE
 ****MAX. JIB CAPACITIES IN HORIZONTAL POSITION
 ****CAPACITES MAXI NOMINALES AVEC JIB
 ****MAX. TRAGKRAFTE AM JIB IN HORIZONTAL
 ****CAPACIDAD MAXIMA DE LA ANTENA EN HORIZONTAL



E ANTENNE IDRAULICHE (J) POSSONO ESSERE INSTALLATE ANCHE SULLE GRU IN VERSIONE LC

The hydraulic jib can be mounted on the LC version - Les bras articulés (J) peuvent être installés sur les grues en version LC également
 Hydraulische Knickarme können auch auf die LC Ausführungen montiert werden - Las antenas hidraulicas se pueden montar también en gruas version LC





DATI TECNICI - TECHNICAL DATA - DONNÉES TECHNIQUES - TECHNISCHE DATEN - DATOS TECNICOS

| | 37022 | 37023 | 37024 | 37025 | 37026 | 37027 | |
|-----------------------------------------------------------------------------------------------------------------------------------------------------------------------------------------------------------|-------|--------|--------|--------|--------|--------|--------|
| MOMENTO DI SOLLEVAMENTO MASSIMO - <i>Maximum lifting moment</i> <i>Moment de levage maxi - Max. Lastmoment - Momento de elevación máxima</i> | kNm | 324 | 313 | 306 | 300 | 297 | 295 |
| | tm | 33,0 | 32,0 | 31,2 | 30,6 | 30,3 | 30,1 |
| SBRACCIO OLEODINAMICO - <i>Maximum hydraulic reach - Allongement hydraulique</i> <i>Hydraulische Reichweite, Standard - Alcance hidráulico</i> | | | | | | | |
| ORIZZONTALE - <i>Horizontal - Horizontal - Horizontal - Horizontal</i> | m | 8,30 | 10,35 | 12,50 | 14,90 | 17,00 | 19,15 |
| VERTICALE - <i>Vertical - Vertical - Vertikal - Vertical</i> | m | 11,90 | 13,80 | 16,15 | 18,30 | 20,50 | 22,60 |
| SBRACCIO CON PROLUNGHE - <i>Maximum reach with manual extensions</i> <i>Allongement avec rallonges manuelles - Reichweite, manuelle Verlängerungen</i> <i>Alcance con prolongas manuales</i> | | | | | | | |
| ORIZZONTALE - <i>Horizontal - Horizontal - Horizontal - Horizontal</i> | m | 12,50 | 14,30 | 21,85 | 22,20 | 22,55 | 22,85 |
| VERTICALE - <i>Vertical - Vertical - Vertikal - Vertical</i> | m | 16,15 | 17,80 | 25,50 | 25,70 | 26,00 | 26,30 |
| IMPIANTO OLEODINAMICO - <i>Hydraulic system - Circuit hydraulique</i> <i>Hydraulikanlage - Sistema hidráulico</i> | | | | | | | |
| PORTATA RACCOMANDATA - <i>Recommended oil flow - Débit recommandé</i> <i>Empfohlene Fördermenge - Caudal requerido</i> | l/min | 45 | 45 | 45 | 45 | 45 | 45 |
| PRESSIONE MASSIMA - <i>Rated pressure - Pression maxi - Betriebsdruck - Presión máxima</i> | MPa | 30 | 30 | 30 | 29 | 29 | 29 |
| CAPACITÀ DEL SERBATOIO - <i>Tank capacity - Capacité du réservoir - Tankinhalt</i> <i>Capacidad del depósito de aceite</i> | l | 150 | 150 | 150 | 150 | 150 | 150 |
| GRUPPO DI ROTAZIONE - <i>Slewing system - Rotation - Schwenksystem - Sistema de giro</i> | | | | | | | |
| ANGOLO DI ROTAZIONE - <i>Slewing angle - Angle de rotation - Schwenkbereich - Ángulo de giro</i> | ° | 410 | 410 | 410 | 410 | 410 | 410 |
| COPPIA DI ROTAZIONE - <i>Slewing moment - Couple de rotation - Schwenkmoment - Momento de giro</i> | kNm | 38 | 38 | 38 | 38 | 38 | 38 |
| PENDENZA MASSIMA DI LAVORO - <i>Max. working heel - Devers maxi de travail</i> <i>Max. Arbeitsneigung - Inclinação máxima de trabajo</i> | % (°) | 8,7(5) | 8,7(5) | 8,7(5) | 8,7(5) | 8,7(5) | 8,7(5) |
| PESO GRU STANDARD - <i>Standard crane weight - Poids de la grue standard</i> <i>Eigengewicht - Peso de la grúa est</i> | Kg | 3590 | 3840 | 4060 | 4270 | 4450 | 4620 |
| IN VERSIONE LC - <i>LC Version</i> | Kg | 3740 | 3990 | 4210 | 4420 | 4600 | 4770 |
| CON SERBATOIO NON RIFORMITO - <i>Empty oil tank - Reservoir huile non garni - Oeltank leer - Deposito de aceite vacío</i> | | | | | | | |

TUTTE LE GRU PM SONO COPERTE DA POLIZZA ASSICURATIVA INTERNAZIONALE PER LA RESPONSABILITÀ CIVILE VERSO TERZI
 ALL PM CRANES ARE COVERED BY AN INTERNATIONAL INSURANCE POLICY FOR CIVIL LIABILITY THIRD PARTY
 TOUTES LES GRUES SONT COUVERTES PAR UNE POLICE D'ASSURANCE INTERNATIONALE DE RESPONSABILITÉ CIVILE ENVERS TIERS
 PM-KRANE SIND DURCH EINE INTERNATIONALE HAFTPFLICHTVERSICHERUNG GEGEN DRITTE ABGESICHERT
 TODAS LAS GRUAS PM CUENTAN CON UNA POLIZA DE SEGUROS INTERNACIONAL CONTRA LAS RESPONSABILIDADES CIVILES HACIA TERCEROS



DATI TECNICI - TECHNICAL DATA - DONNÉES TECHNIQUES - TECHNISCHE DATEN - DATOS TECNICOS

| | | 37023 +J903 | 37024 +J903 | 37024 +J904 | 37025 +J903 | 37025 +J904 | 37026 +J702 | 37026 +J703 |
|---------------------------------------------------------------------------------------------------------------------------|-------|----------------|----------------|----------------|----------------|----------------|----------------|----------------|
| MOMENTO DI SOLLEVAMENTO MASSIMO - Maximum lifting moment | kNm | -- | -- | -- | -- | -- | -- | -- |
| <i>Moment de levage maxi - Max. Lastmoment - Momento de elevación máxima</i> | tm | -- | -- | -- | -- | -- | -- | -- |
| SBRACCIO OLEODINAMICO - Maximum hydraulic reach - Allongement hydraulique | | | | | | | | |
| <i>Hydraulische Reichweite, Standard - Alcance hidráulico</i> | | | | | | | | |
| ORIZZONTALE - Horizontal - Horizontal - Horizontal - Horizontal | m | 18,30 | 20,50 | 22,30 | 22,65 | 24,50 | 22,45 | 24,75 |
| VERTICALE - Vertical - Vertical - Vertikal - Vertical | m | 21,90 | 24,10 | 25,85 | 26,25 | 28,00 | 26,80 | 29,10 |
| SBRACCIO CON PROLUNGHE - Maximum reach with manual extensions | | | | | | | | |
| <i>Allongement avec rallonges manuelles - Reichweite, manuelle Verlängerungen</i> | | | | | | | | |
| <i>Alcance con prolongas manuales</i> | | | | | | | | |
| ORIZZONTALE - Horizontal - Horizontal - Horizontal - Horizontal | m | 23,85 | 26,40 | 26,10 | 28,20 | 28,20 | 28,35 | 28,30 |
| VERTICALE - Vertical - Vertical - Vertikal - Vertical | m | 27,35 | 29,50 | 29,50 | 31,70 | 31,70 | 32,70 | 32,65 |
| IMPIANTO OLEODINAMICO - Hydraulic system - Circuit hydraulique | | | | | | | | |
| <i>Hydraulikanlage - Sistema hidráulico</i> | | | | | | | | |
| PORTATA RACCOMANDATA - Recommended oil flow - Débit recommandé | | | | | | | | |
| <i>Empfohlene Fördermenge - Caudal requerido</i> | l/min | 45 | 45 | 45 | 45 | 45 | 45 | 45 |
| PRESIONE MASSIMA - Rated pressure - Pression maxi - Betriebsdruck - Presión máxima | MPa | 30 | 30 | 30 | 30 | 30 | 30 | 30 |
| CAPACITÀ DEL SERBATOIO - Tank capacity - Capacité du réservoir - Tankinhalt | | | | | | | | |
| <i>Capacidad del depósito de aceite</i> | l | 150 | 150 | 150 | 150 | 150 | 150 | 150 |
| GRUPPO DI ROTAZIONE - Slewing system - Rotation - Schwenksystem - Sistema de giro | | | | | | | | |
| <i>ANGOLO DI ROTAZIONE - Slewing angle - Angle de rotation - Schwenkbereich - Ángulo de giro</i> | ° | 410 | 410 | 410 | 410 | 410 | 410 | 410 |
| <i>COPPIA DI ROTAZIONE - Slewing moment - Couple de rotation - Schwenkmoment - Momento de giro</i> | kNm | 38 | 38 | 38 | 38 | 38 | 38 | 38 |
| <i>PENDENZA MASSIMA DI LAVORO - Max. working heel - Devers maxi de travail</i> | | | | | | | | |
| <i>Max. Arbeitsneigung - Inclinación máxima de trabajo</i> | % (°) | 8,7(5) | 8,7(5) | 8,7(5) | 8,7(5) | 8,7(5) | 8,7(5) | 8,7(5) |
| PESO GRU STANDARD - Standard crane weight - Poids de la grue standard | | | | | | | | |
| <i>Eigengewicht - Peso de la grúa est</i> | Kg | 4510 | 4730 | 4810 | 4940 | 5020 | 4950 | 5010 |
| <i>IN VERSIONE LC - LC Version</i> | Kg | 4660 | 4880 | 4960 | 5090 | 5170 | 5100 | 5160 |
| CON SERBATOIO NON RIFORNITO - Empty oil tank - Reservoir huile non garni - Oeltank leer - Deposito de aceite vacío | | | | | | | | |

- I dati tecnici possono essere aggiornati senza preavviso
- Technical data can be revised without prior notice
- Les données techniques peuvent être modifiées sans préavis
 - Technische Änderungen vorbehalten
 - Reservado el derecho de modificaciones

CRANES, IN ALL THE LANGUAGES OF THE WORLD

ARGENTINA
AUSTRALIA
BELGIUM
BRAZIL
CANADA
CHILE
COLOMBIA
CZECH REP
CYPRUS
DENMARK
EGYPT
EAST/NORTH EUROPE
EIRE
FINLAND
FRANCE
GERMANY
GREECE
HONG KONG
INDONESIA
ITALY
JORDAN
MALAYSIA
MALTA
MEXICO
MOROCCO
NORWAY
OCEANIA
NETHERLANDS
PERU
PHILIPPINES
POLAND
PORTUGAL
P.R.C.
QUATAR
ROMANIA
SAUDI ARABIA
SINGAPORE
SPAIN
SOUTH AFRICA
SOUTH AMERICA
SWITZERLAND
THAILAND
TAIWAN
TOBAGO
TRINIDAD
TUNISIA
TURKEY
UNITED ARAB EMIRATES
USA
UK
VENEZUELA
VIETNAM



Autogru PM spa - via Emilia Est, 1058 - 41100 Modena MO (ITALY)
Tel. +39 059 20.54.711 - Fax +39 059 28.07.47 - Export Fax +39 059 28.25.05
e-mail: autogrupm@autogrupm.com www.autogrupm.com