

LA FORZA DELLA QUALITÀ THE POWER OF QUALITY
LA FORCE DE LA QUALITÉ DIE KRAFT DER QUALITÄT LA FUERZA DE LA CALIDAD



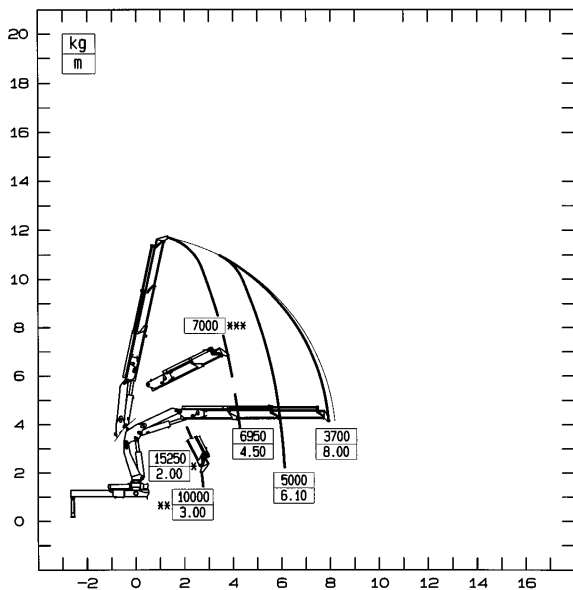
Serie 32

Since 1959



Cranes, in all the languages of the world

32022



* PORTATA MASSIMA NOMINALE AL GANCIO FISSO
 ** PORTATA MASSIMA AL GANCIO MOBILE
 *** PORTATA MASSIMA PASSANTE PER L'ORIZZONTALE
 N.B.: LE PRESTAZIONI INDICATE SI OTTENGONO CON BRACCIO PRINCIPALE INCLINATO A 30°

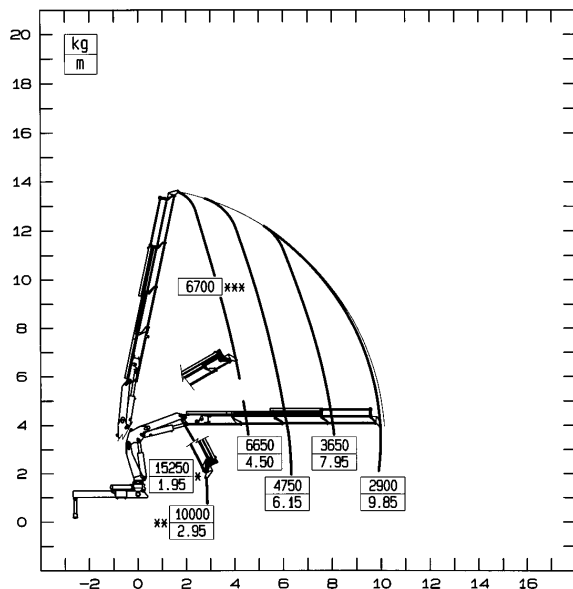
* MAX. NOMINAL CAPACITY WITH FIXED HOOK
 ** MAX. CAPACITY WITH MOBILE HOOK
 *** MAX. CAPACITY FROM HORIZONTAL TO VERTICAL
 N.B.: THE STATED PERFORMANCES CAN BE OBTAINED WITH 30° INCLINATED MAIN BOOM

* CAPACITE MAXI NOMINALE AU CROCHET FIXE
 ** CAPACITE MAXI NOMINALE AU CROCHET MOBILE
 *** CAPACITE MAXI PASSANT PAR L'HORIZONTALE
 N.B.: LES PERFORMANCES INDIQUEES S'OBTIENNENT AVEC 1ER BRAS INCLINE A 30°

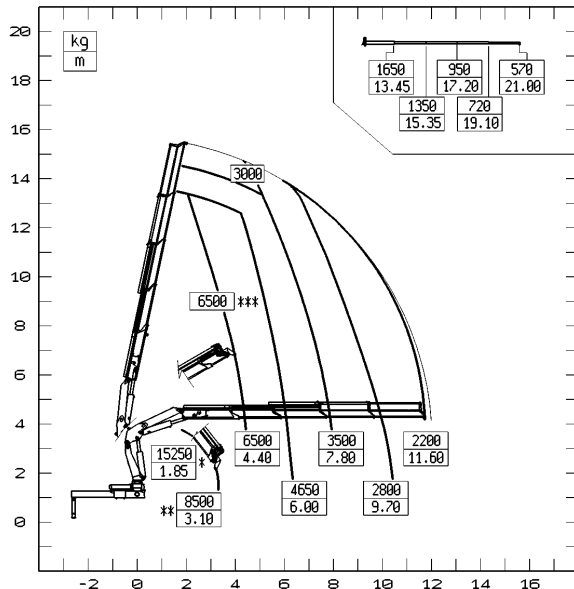
* MAX. NENNTRAGKRAFT AN DER INNEREN HAKENBEFESTIGUNG
 ** MAX. TRAGKRAFT
 *** MAX. TRAGKRAFT VON HORIZONTAL BIS ZU VERTIKAL
 ANMERKUNG: DIE ANGEgebenEN LEISTUNGEN WERDEN MIT 30° GENEIGTEM HUBBRAHMEN ERREICHT

* CAPACIDAD MÁXIMA EN EL GANCHO FIO
 ** CAPACIDAD MÁXIMA EN EL GANCHO MÓVIL
 *** CAPACIDAD MÁXIMA EN POSICIÓN VERTICAL
 N.B.: LAS PRESTACIONES INDICADAS SE OBTIENEN CON EL BRAZO ARTICULADO A 30°

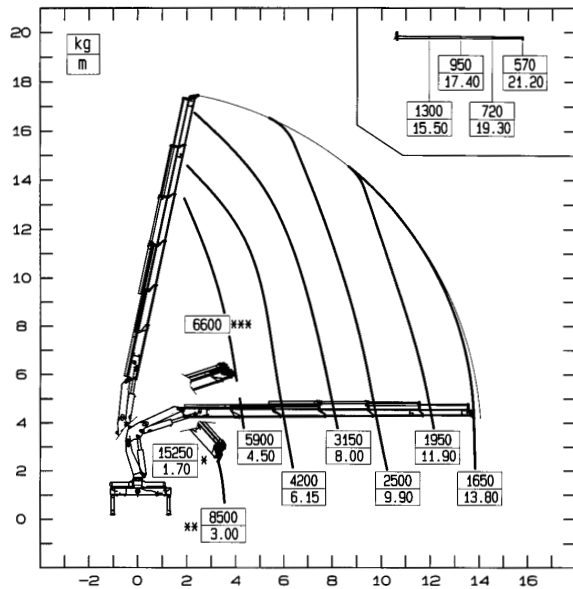
32023



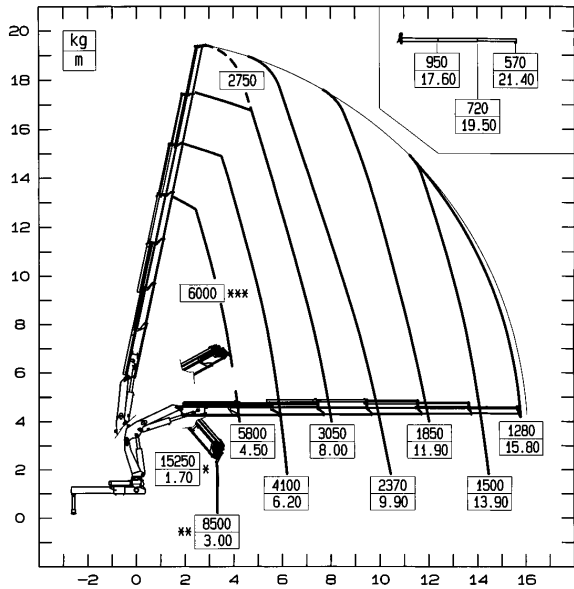
32024



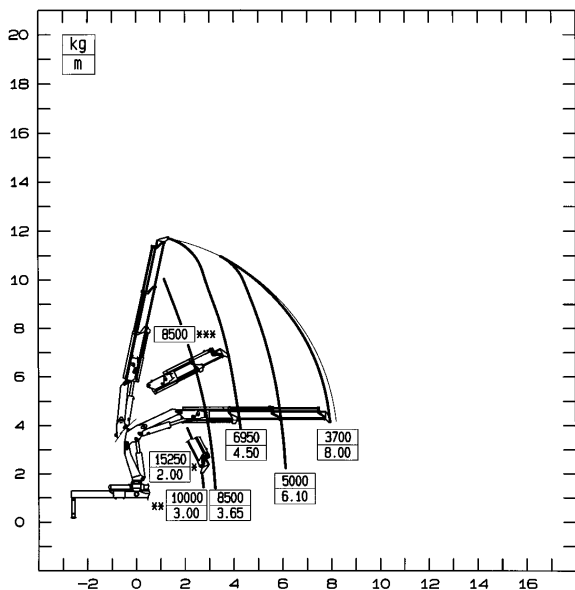
32025



32026

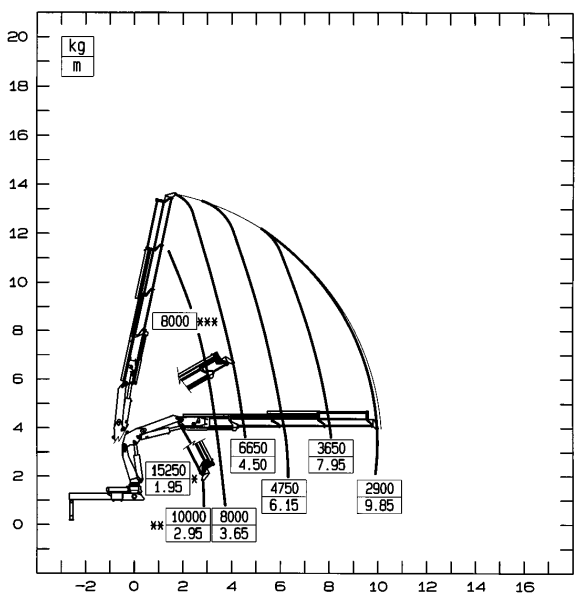


32022 LC

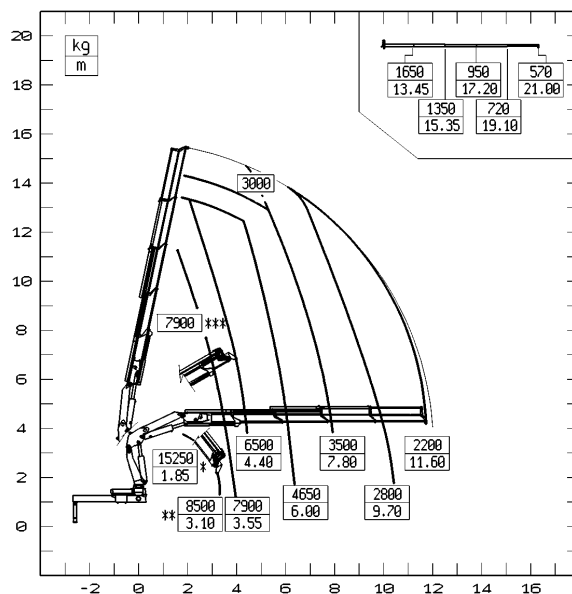


- * PORTATA MASSIMA NOMINALE AL GANCIO FISSO
- ** PORTATA MASSIMA AL GANCIO MOBILE
- *** PORTATA MASSIMA PASSANTE PER L'ORIZZONTALE
- N.B.: LE PRESTAZIONI INDICATE SI OTTENGONO CON BRACCIO PRINCIPALE A 30°
- * MAX. NOMINAL CAPACITY WITH FIXED HOOK
- ** MAX. CAPACITY WITH MOBILE HOOK
- *** MAX. CAPACITY FROM HORIZONTAL TO VERTICAL
- N.B.: THE STATED PERFORMANCES CAN BE OBTAINED WITH 30° INCLINATED MAIN BOOM
- * CAPACITE MAXI NOMINALE AU CROCHET FIXE
- ** CAPACITE MAXI NOMINALE AU CROCHET MOBILE
- *** CAPACITE MAXI PASSANT PAR L'HORIZONTAL
- N.B.: LES PERFORMANCES INDIQUEES S'OBTIENNENT AVEC 1ER BRAS INCLINE A 30°
- * MAX. NENNTRAGKRAFT AN DER INNEREN HAKENBEFESTIGUNG
- ** MAX. TRAGKRAFT
- *** MAX. TRAGKRAFT VON HORIZONTAL BIS ZU VERTIKAL
- ANMERKUNG: DIE ANGEGEBENEN LEISTUNGEN WERDEN MIT 30° GENEIGTEM HUBBRAMMEN ERREICHT
- * CAPACIDAD MÁXIMA EN EL GANCHO FIJO
- ** CAPACIDAD MÁXIMA EN EL GANCHO MÓVIL
- *** CAPACIDAD MÁXIMA EN POSICIÓN VERTICAL
- N.B.: LAS PRESTACIONES INDICADAS SE OBTIENEN CON EL BRAZO ARTICULADO A 30°

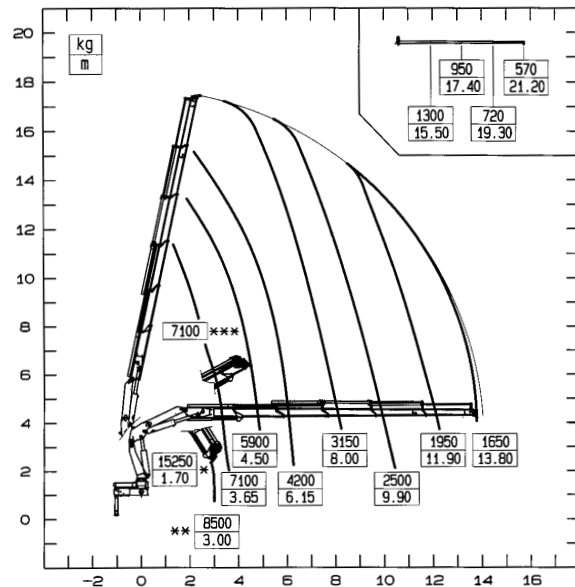
32023 LC



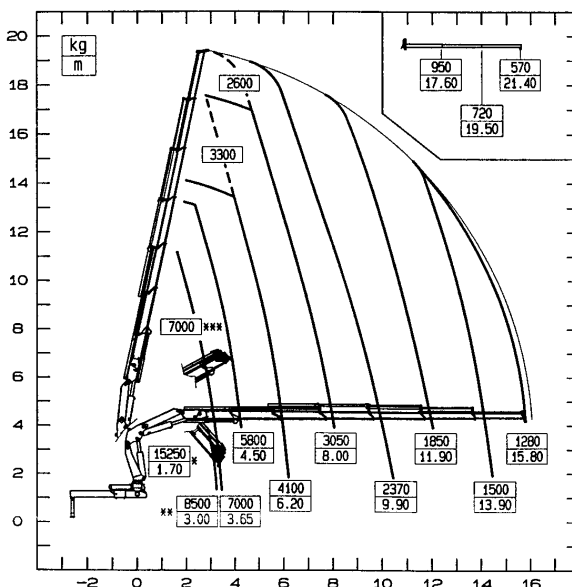
32024 LC



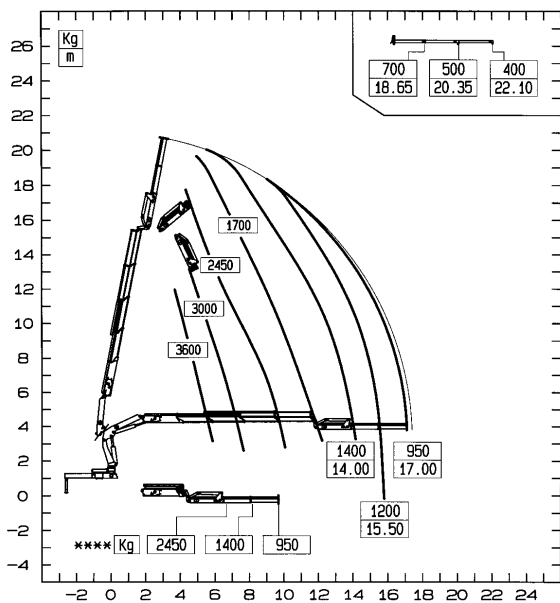
32025 LC



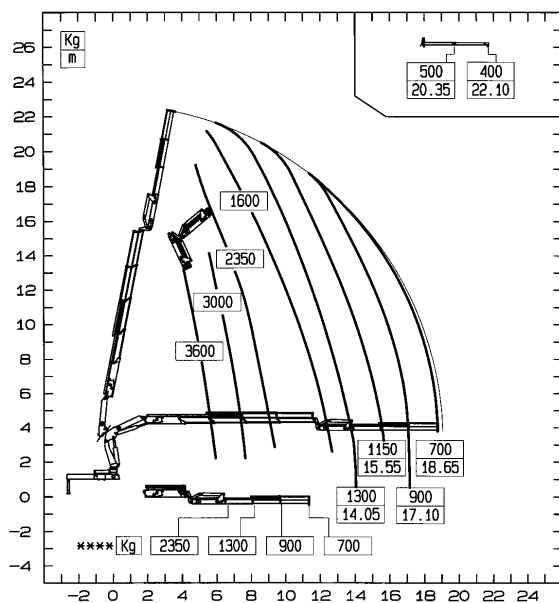
32026 LC



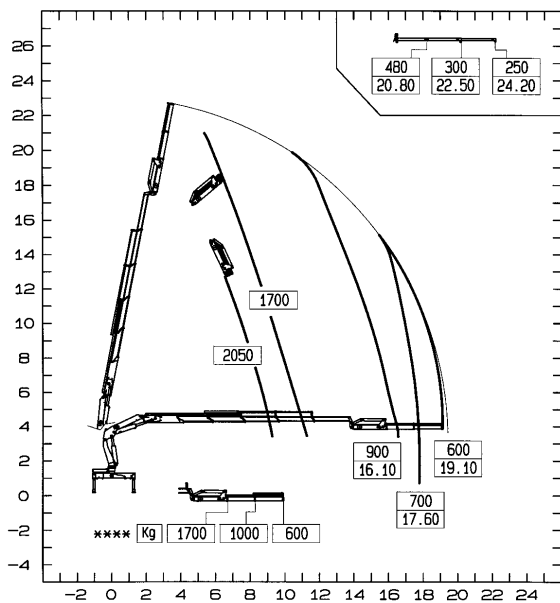
32024+J62



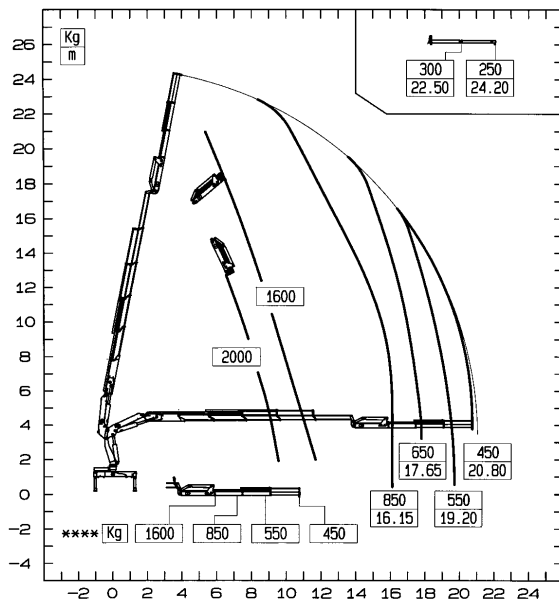
32024+J63



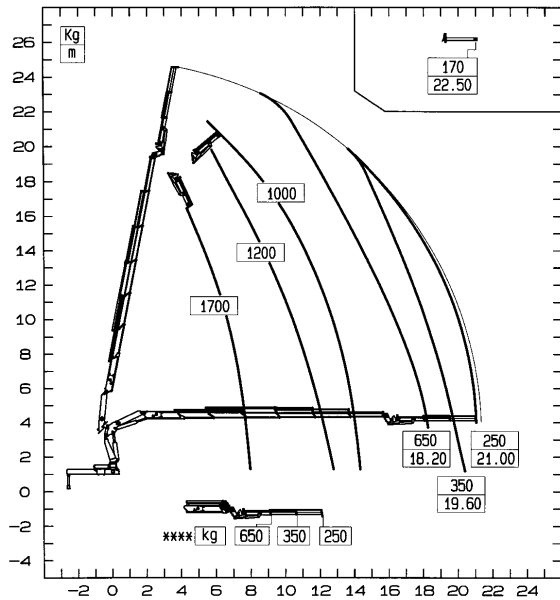
32025+J62



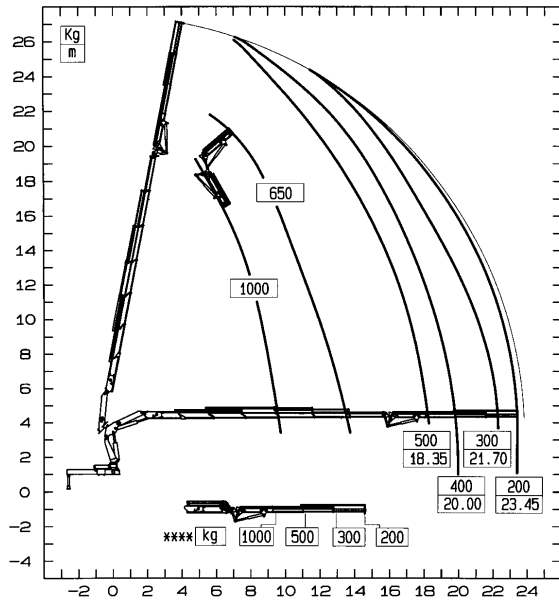
32025+J63



32026+J12 L



32026+J53 L



**** PORTATE MASSIME DELL'ANTENNA IN ORIZZONTALE



TUTTE LE GRU PM SONO COPERTE DA POLIZZA ASSICURATIVA INTERNAZIONALE PER LA RESPONSABILITÀ CIVILE VERSO TERZI
ALL PM CRANES ARE COVERED BY AN INTERNATIONAL INSURANCE POLICY FOR CIVIL LIABILITY THIRD PARTY
TOUTES LES GRUES SONT COUVERTES PAR UNE POLICE D'ASSURANCE INTERNATIONALE DE RESPONSABILITÉ CIVILE ENVERS TIERS
PM-KRANE SIND DURCH EINE INTERNATIONALE HAFTPFLICHTVERSICHERUNG GEGEN DRITTE ABGESICHERT
TODAS LAS GRUAS PM CUENTAN CON UNA PÓLIZA DE SEGUROS INTERNACIONAL CONTRA LAS RESPONSABILIDADES CIVILES HACIA TERCEROS

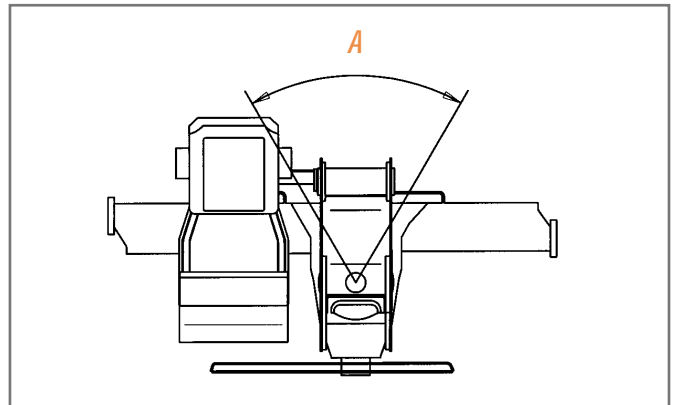
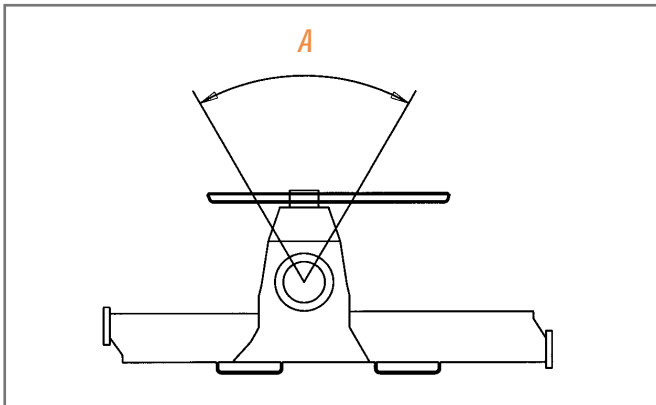
• I dati tecnici possono essere aggiornati senza preavviso • Technical data can be revised without prior notice
• Les données techniques peuvent être modifiées sans préavis • Technische Änderungen vorbehalten • Reservado el derecho de modificaciones

POSIZIONE DEL PUNTO MORTO DELLA ROTAZIONE

POSITION DU POINT MORT DE ROTATION - DEAD POINT POSITION - TOTPUNKTSTELLUNG - LADO DE PARO DEL SISTEMA DE GIRO DE LA GRUA

GRU STANDARD - GRUES STANDARD - STANDARD CRANES
STANDARD KRANE - GRUA ESTANDAR

GRU CON POSTO DI MANOVRA IN ALTO - GRUES AVEC SIEGE EN HAUT - CRANE MODELS WITH TOP SEAT
KRANMODELLE MIT HOCHSITZ - GRUAS CON ASIENTO EN COLUMNA



A PUNTO MORTO - POINT MORT DE ROTATION - DEAD POINT POSITION - TOTPUNKTSTELLUNG - LADO DE PARO



CRANES, IN ALL THE LANGUAGES OF THE WORLD



SAUDI ARABIA
ARGENTINA
BELGIUM
BRAZIL
CANADA
CHILE
COLOMBIA
CZECH REP
CYPRUS
DENMARK
EGYPT
UNITED ARAB EMIRATES
EAST/NORTH EUROPE
FRANCE
GERMANY
GREECE
HONG KONG
INDONESIA
ITALY
JORDAN
MALAYSIA
MOROCCO
NORWAY
OCEANIA
NETHERLANDS
PERU
PHILIPPINES
POLAND
PORTUGAL
P.R.C.
QATAR
ROMANIA
UK
SINGAPORE
SPAIN
SOUTH AFRICA
SOUTH AMERICA
SWITZERLAND
THAILAND
TAIWAN
TUNISIA
TURKEY
USA
VENEZUELA
VIETNAM



Autogru PM spa - via Emilia Est, 1058 - 41100 Modena MO (ITALY)
Tel. +39 059 20.54.711 - Fax +39 059 28.07.47 - Export Fax +39 059 28.25.05
e-mail: autogrupm@autogrupm.com www.autogrupm.com