

*CRANES, IN ALL THE LANGUAGES OF THE WORLD*

ARGENTINA  
AUSTRALIA  
BELGIUM  
BRAZIL  
CANADA  
CHILE  
COLOMBIA  
CZECH REP  
CYPRUS  
DENMARK  
EGYPT  
EAST/NORTH EUROPE  
EIRE  
FINLAND  
FRANCE  
GERMANY  
GREECE  
HOLLAND  
HONG KONG  
INDONESIA  
ITALY  
JORDAN  
MALAYSIA  
MOROCCO  
NORWAY  
OCEANIA  
NETHERLANDS  
PERU  
PHILIPPINES  
POLAND  
PORTUGAL  
P.R.C.  
QUATAR  
ROMANIA  
SAUDI ARABIA  
SINGAPORE  
SPAIN  
SOUTH AFRICA  
SOUTH AMERICA  
SWITZERLAND  
THAILAND  
TAIWAN  
TOBAGO  
TRINIDAD  
TUNISIA  
TURKEY  
UNITED ARAB EMIRATES  
USA  
UK  
VENEZUELA  
VIETNAM



Autogru PM spa - via Emilia Est, 1058 - 41100 Modena MO (ITALY)  
Tel. +39 059 20.54.711 - Fax +39 059 28.07.47 - Export Fax +39 059 28.25.05  
e-mail: [autogrupm@autogrupm.com](mailto:autogrupm@autogrupm.com) [www.autogrupm.com](http://www.autogrupm.com)

Since 1959



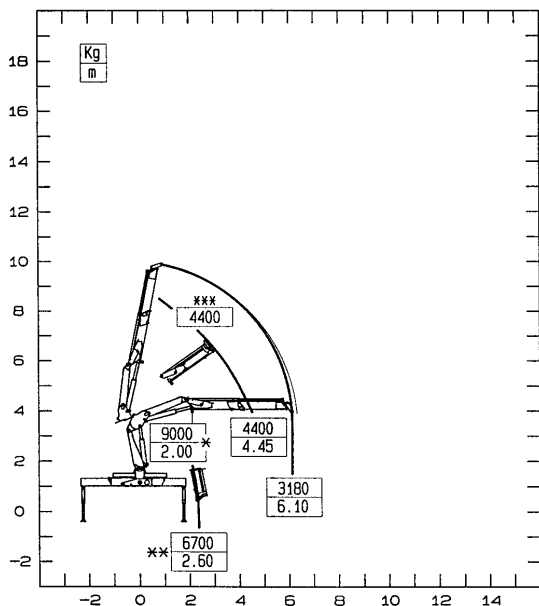
*Cranes, in all the languages of the world*

# *Serie 20*



LA FORZA DELLA QUALITÀ THE POWER OF QUALITY  
LA FORCE DE LA QUALITE DIE KRAFT DER QUALITÄT LA FUERZA DE LA CALIDAD

## 20021



- \* PORTATA MASSIMA NOMINALE AL GANCIO FISSO
- \*\* PORTATA MASSIMA AL GANCIO MOBILE
- \*\*\* PORTATA MASSIMA PASSANTE PER L'ORIZZONTALE
- N.B.: LE PRESTAZIONI INDICATE SI OTTENGONO CON BRACCIO PRINCIPALE A 25°

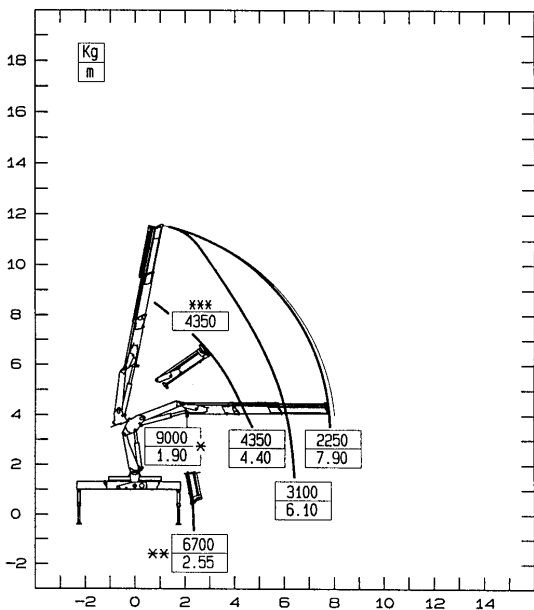
- \* MAX. NOMINAL CAPACITY WITH FIXED HOOK
- \*\* MAX. CAPACITY WITH MOBILE HOOK
- \*\*\* MAX. CAPACITY FROM HORIZONTAL TO VERTICAL
- N.B.: THE STATED PERFORMANCES CAN BE OBTAINED WITH 25° INCLINATED MAIN BOOM

- \* CAPACITE MAXI NOMINALE AU CROCHET FIXE
- \*\* CAPACITE MAXI NOMINALE AU CROCHET MOBILE
- \*\*\* CAPACITE MAXI PASSANT PAR L'HORIZONTALE
- N.B.: LES PERFORMANCES INDIQUEES S'OBTIENNENT AVEC 1ER BRAS INCLINE A 25°

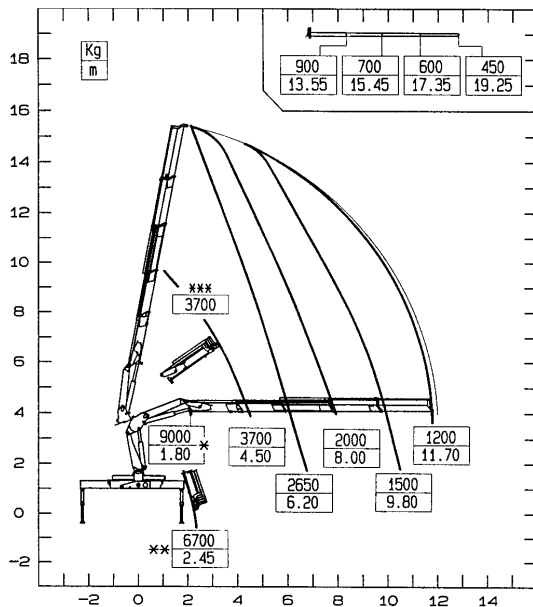
- \* MAX. NENNTRAGKRAFT AN DER INNEREN HAKENBEFESTIGUNG
- \*\* MAX. TRAGKRAFT
- \*\*\* MAX. TRAGKRAFT VON HORIZONTAL BIS ZU VERTIKAL
- ANMERKUNG: DIE ANGEGBENEN LEISTUNGEN WERDEN MIT 25° GENEIGTEM HUBRAHMEN ERREICHT

- \* CAPACIDAD MÁXIMA EN EL GANCHO FIJO
- \*\* CAPACIDAD MÁXIMA EN EL GANCHO MÓVIL
- \*\*\* CAPACIDAD MÁXIMA EN POSICIÓN VERTICAL
- N.B.: LAS PRESTACIONES INDICADAS SE OBTIENEN CON EL BRAZO ARTICULADO A 25°

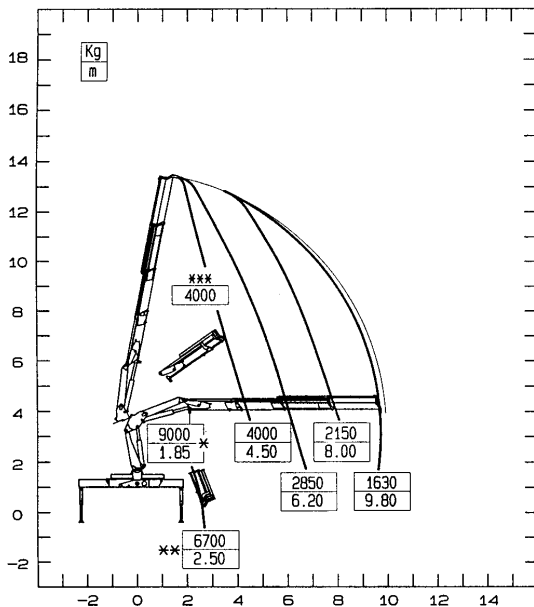
## 20022



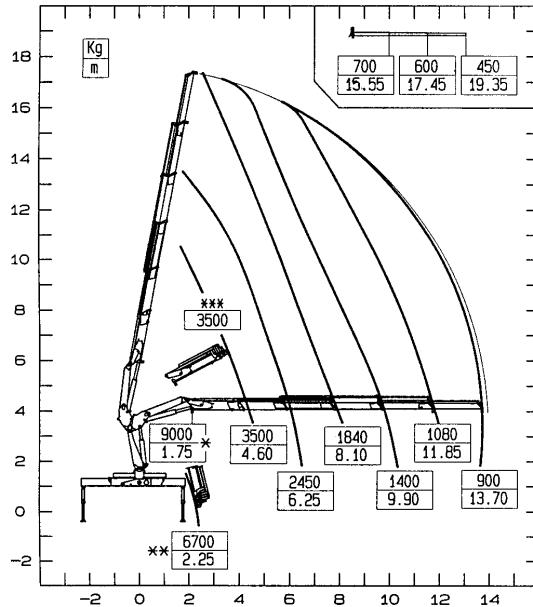
## 20024



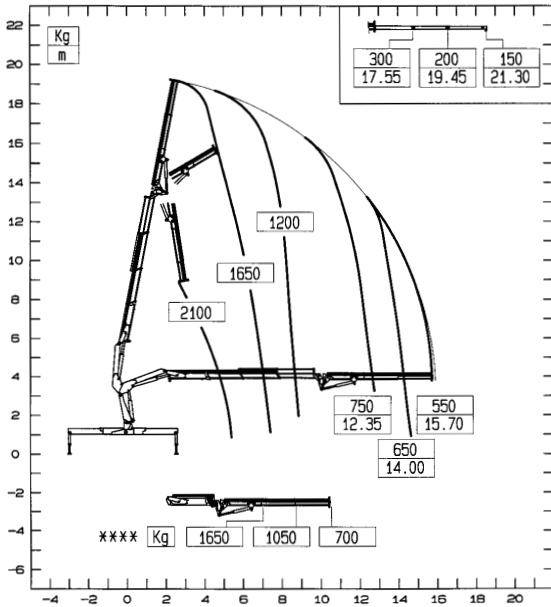
## 20023



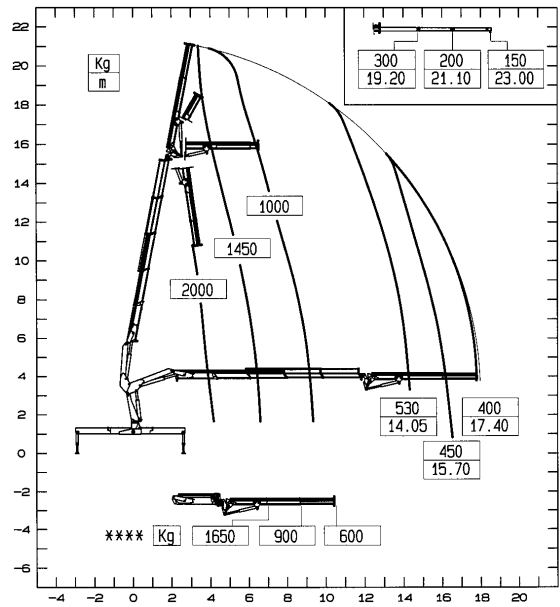
## 20025



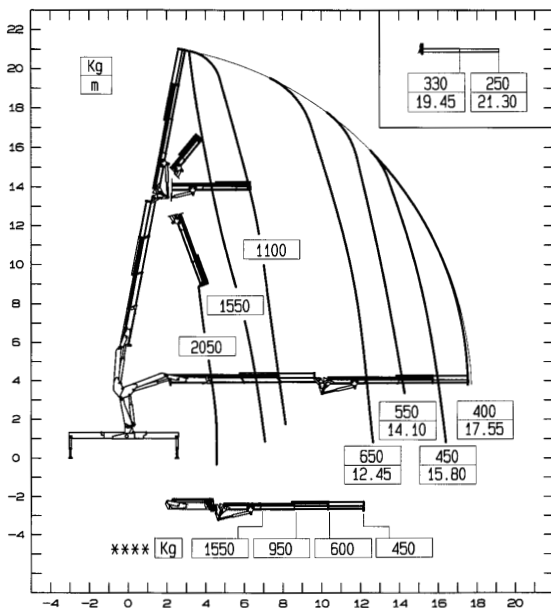
20023+J52



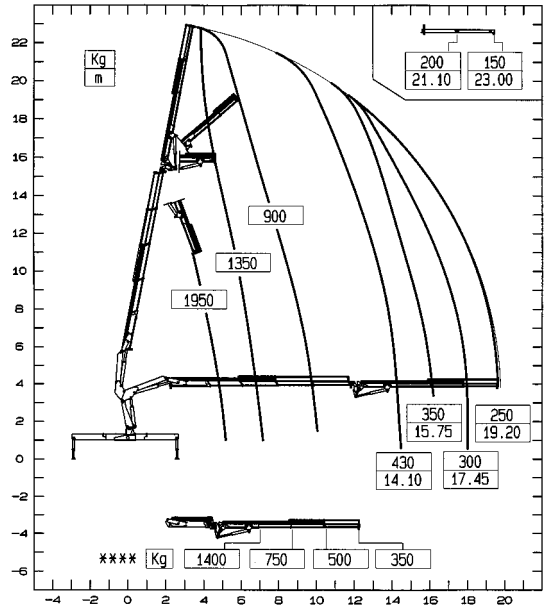
20024+J52



20023+J53



20024+J53

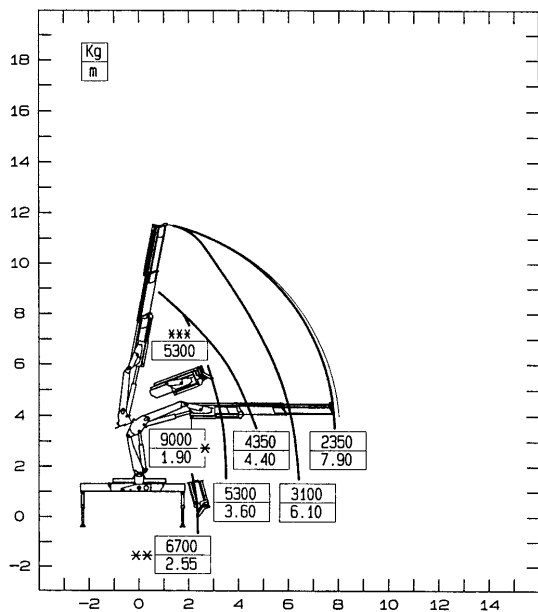


\*\*\*\*PORTATE MASSIME DELL'ANTENNA IN ORIZZONTALE - \*\*\*\*MAX. JIB CAPACITIES IN HORIZONTAL POSITION - \*\*\*\*CAPACITES MAXI NOMINALES AVEC JIB  
 \*\*\*\*MAX. TRAGKRAFTE AM JIB IN HORIZONTAL - \*\*\*\*CAPACIDAD MAXIMA DE LA ANTENA EN HORIZONTAL

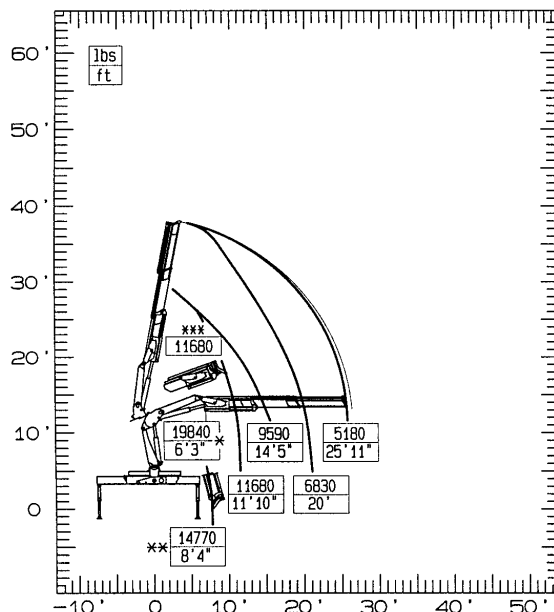
TUTTE LE GRU PM SONO COPERTE DA POLIZZA ASSICURATIVA INTERNAZIONALE PER LA RESPONSABILITÀ CIVILE VERSO TERZI  
 ALL PM CRANES ARE COVERED BY AN INTERNATIONAL INSURANCE POLICY FOR CIVIL LIABILITY THIRD PARTY  
 TOUTES LES GRUES SONT COUVERTES PAR UNE POLICE D'ASSURANCE INTERNATIONALE DE RESPONSABILITÉ CIVILE ENVERS TIERS  
 PM-KRÄNE SIND DURCH EINE INTERNATIONALE HAFTPFLICHTVERSICHERUNG GEGEN DRITTE ABGESICHERT  
 TODAS LAS GRUAS PM CUENTAN CON UNA PÓLIZA DE SEGUROS INTERNACIONAL CONTRA LAS RESPONSABILIDADES CIVILES HACIA TERCEROS

- I dati tecnici possono essere aggiornati senza preavviso
- Technical data can be revised without prior notice
- Les données techniques peuvent être modifiées sans préavis
  - Technische Änderungen vorbehalten
  - Reservado el derecho de modificaciones

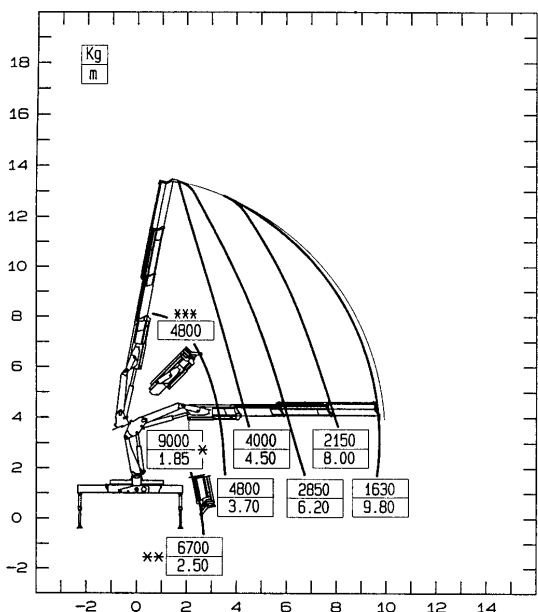
20022 LC



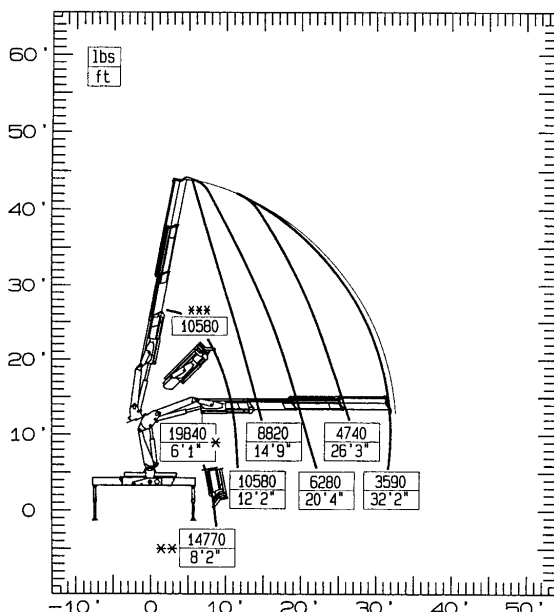
20022 LC



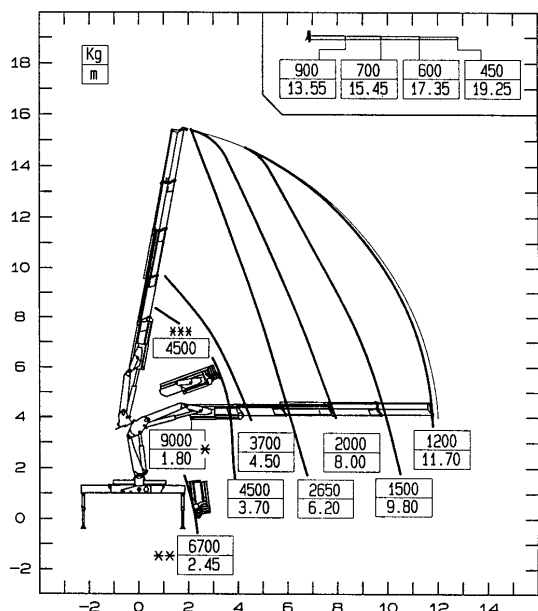
20023 LC



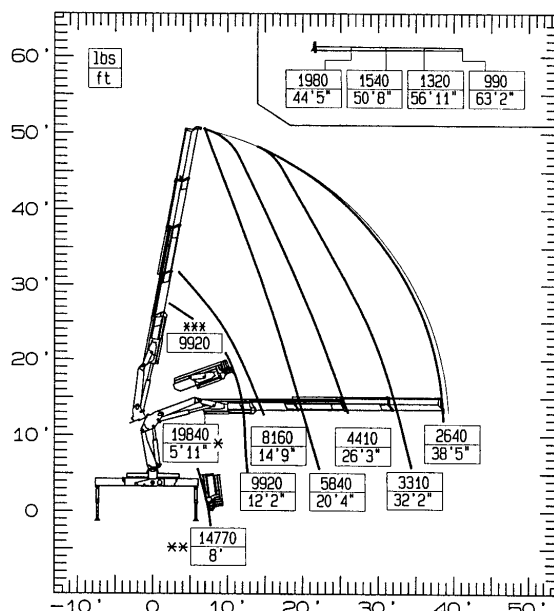
20023 LC



20024 LC

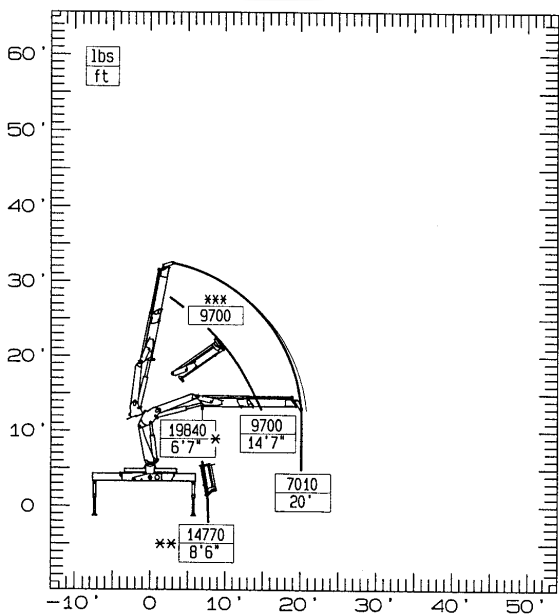


20024 LC





20021



\* PORTATA MASSIMA NOMINALE AL GANCIO FISSO  
 \*\* PORTATA MASSIMA AL GANCIO MOBILE  
 \*\*\* PORTATA MASSIMA PASSANTE PER L'ORIZZONTALE  
 N.B.: LE PRESTAZIONI INDICATE SI OTTENGONO CON BRACCIO PRINCIPALE A 25°

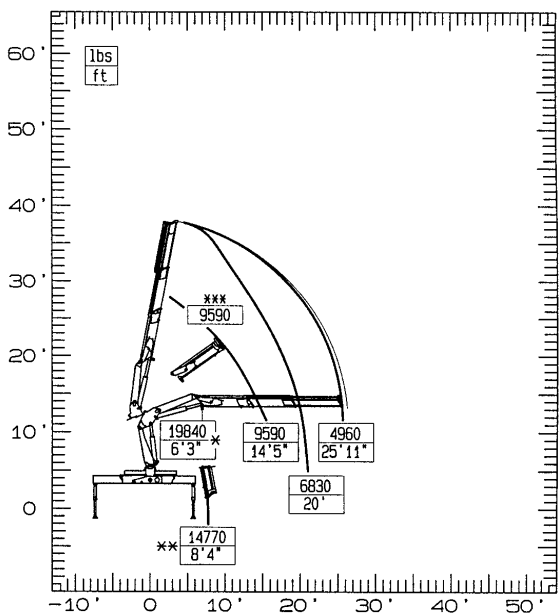
\* MAX. NOMINAL CAPACITY WITH FIXED HOOK  
 \*\* MAX. CAPACITY WITH MOBILE HOOK  
 \*\*\* MAX. CAPACITY FROM HORIZONTAL TO VERTICAL  
 N.B.: THE STATED PERFORMANCES CAN BE OBTAINED WITH 25° INCLINATED MAIN BOOM

\* CAPACITE MAXI NOMINALE AU CROCHET FIXE  
 \*\* CAPACITE MAXI NOMINALE AU CROCHET MOBILE  
 \*\*\* CAPACITE MAXI PASSANT PAR L'HORIZONTALE  
 N.B.: LES PERFORMANCES INDIQUEES S'OBTIENNENT AVEC 1ER BRAS INCLINE A 25°

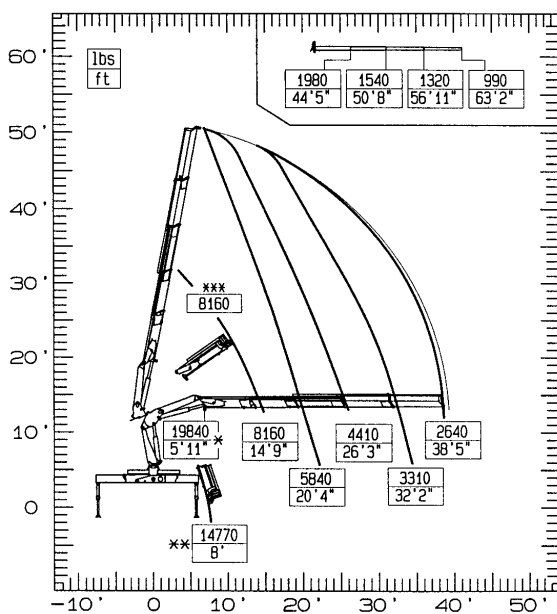
\* MAX. NENNTRAGKRAFT AN DER INNEREN HAKENBEFESTIGUNG  
 \*\* MAX. TRAGKRAFT  
 \*\*\* MAX. TRAGKRAFT VON HORIZONTAL BIS ZU VERTIKAL  
 ANMERKUNG: DIE ANGEGEBENEN LEISTUNGEN WERDEN MIT 25° GENEIGTEM HUBBRAHMEN ERREICHT

\* CAPACIDAD MÁXIMA EN EL GANCHO FIJO  
 \*\* CAPACIDAD MÁXIMA EN EL GANCHO MÓVIL  
 \*\*\* CAPACIDAD MÁXIMA EN POSICIÓN VERTICAL  
 N.B.: LAS PRESTACIONES INDICADAS SE OBTIENEN CON EL BRAZO ARTICULADO A 25°

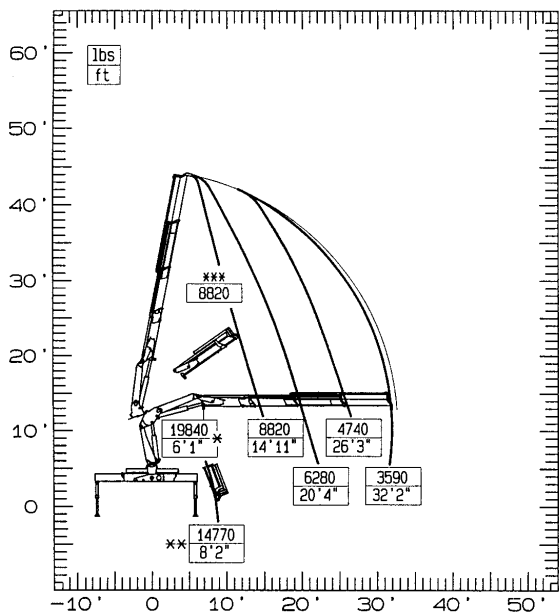
20022



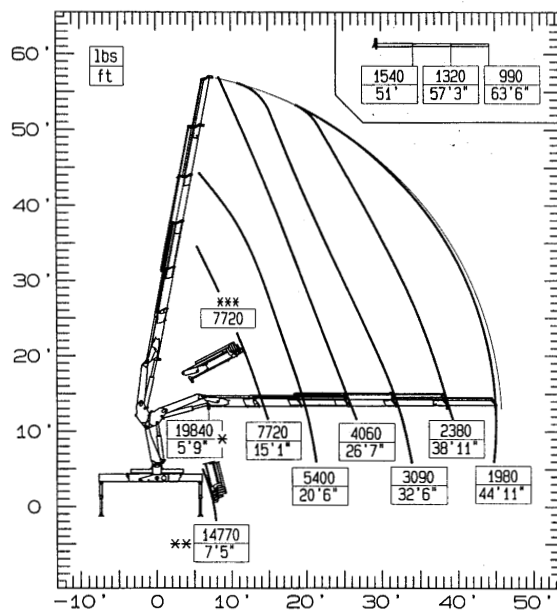
20024



20023

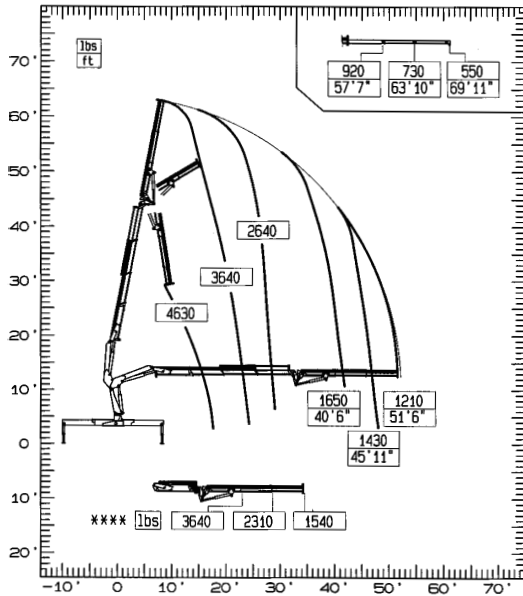


20025

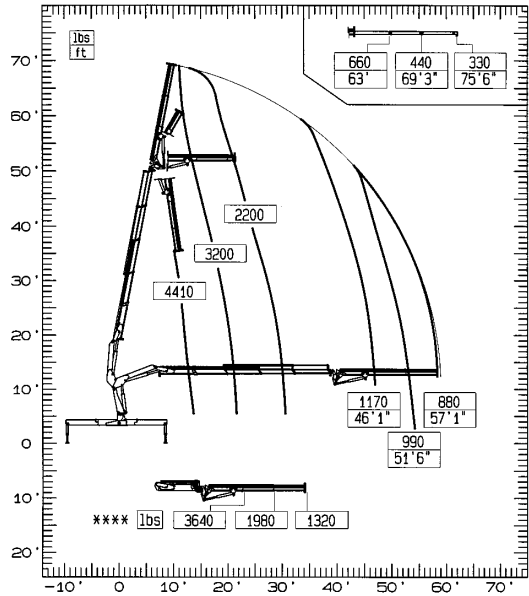




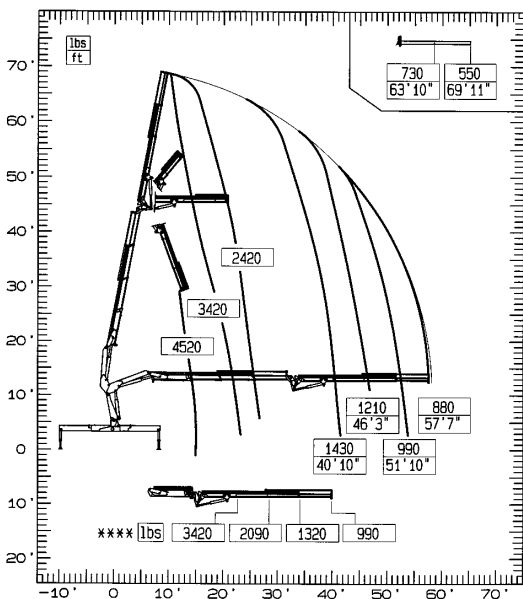
20023+J52



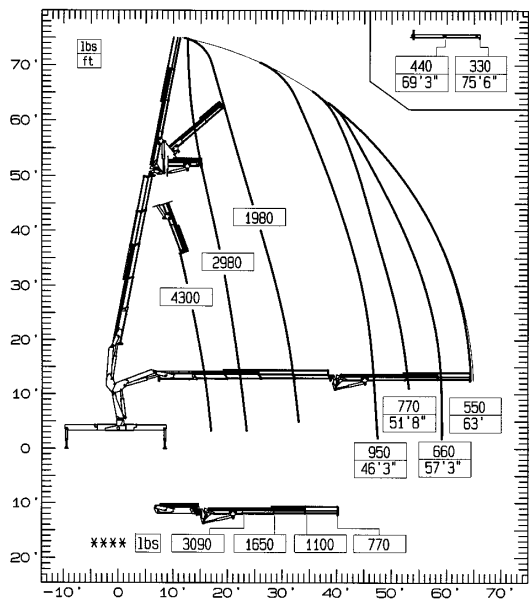
20024+J52



20023+J53

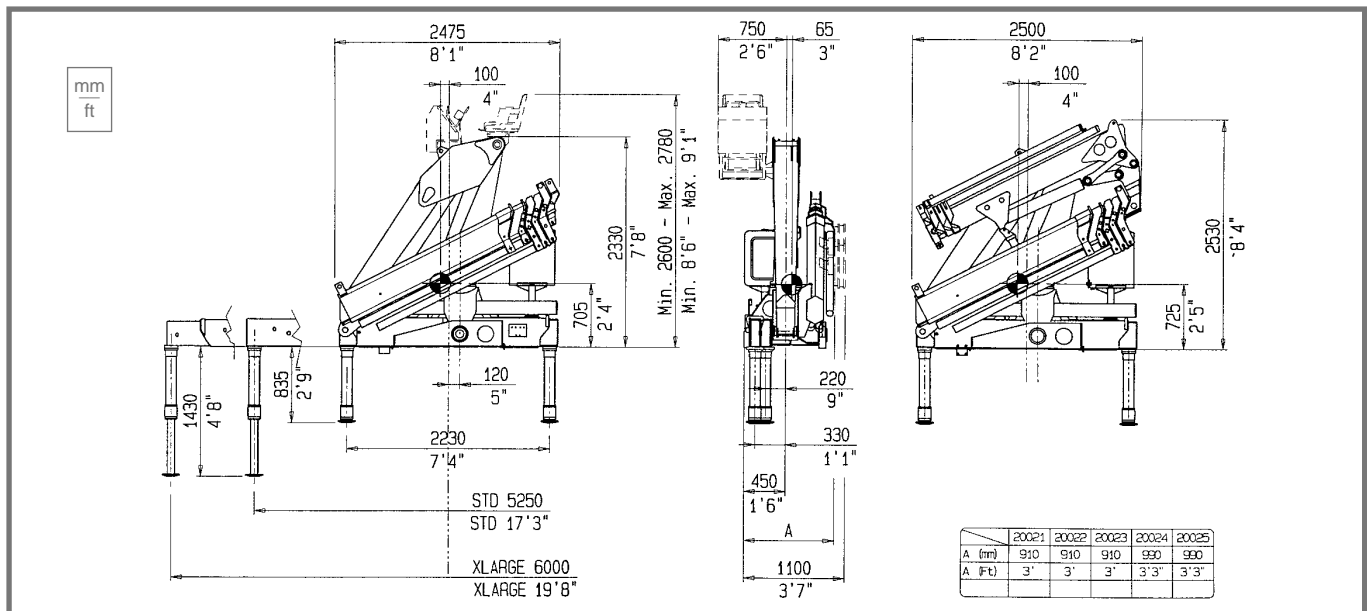


20024+J53



\*\*\*\*PORTATE MASSIME DELL'ANTENNA IN ORIZZONTALE - \*\*\*\*MAX. JIB CAPACITIES IN HORIZONTAL POSITION - \*\*\*\*CAPACITES MAXI NOMINALES AVEC JIB  
 \*\*\*\*MAX. TRAGKRAFT AM JIB IN HORIZONTAL - \*\*\*\*CAPACIDAD MAXIMA DE LA ANTENA EN HORIZONTAL





**DATI TECNICI - TECHNICAL DATA - DONNÉES TECHNIQUES  
TECHNISCHE DATEN - DATOS TECNICOS**

20021 20022 20023 20024 20025 20023 +J52 20023 +J53 20024 +J52 20024 +J53

<b>MOMENTO DI SOLLEVAMENTO MASSIMO - Maximum lifting moment</b> <i>Moment de levage maxi - Max. Lastmoment - Momento de elevación máxima</i>	kNm	192	188	177	164	159	--	--	--
	tm	19,6	19,2	18,0	16,7	16,2	--	--	--
<b>SBRACCIO OLEODINAMICO - Maximum hydraulic reach - Allongement hydraulique</b> <i>Hydraulische Reichweite, Standard - Alcance hidráulico</i>									
ORIZZONTALE - Horizontal - Horizontal - Horizontal - Horizontal	m	6,35	8,15	10,05	11,90	14,00	15,90	17,75	19,40
VERTICALE - Vertical - Vertical - Vertikal - Vertical	m	9,90	11,60	13,40	15,40	17,40	19,10	20,90	22,85
<b>SBRACCIO CON PROLUNGHE - Maximum reach with manual extensions</b> <i>Allongement avec rallonges manuelles - Reichweite, manuelle Verlängerungen</i> <i>Alcance con prolongas manuales</i>									
ORIZZONTALE - Horizontal - Horizontal - Horizontal - Horizontal	m	--	--	--	19,45	19,55	21,50	21,50	23,20
VERTICALE - Vertical - Vertical - Vertikal - Vertical	m	--	--	--	22,90	23,00	24,50	24,50	26,40
<b>IMPIANTO OLEODINAMICO - Hydraulic system - Circuit hydraulique</b> <i>Hydraulikanlage - Sistema hidráulico</i>									
PORTATA RACCOMANDATA - Recommended oil flow - Débit recommandé	l/min	45	45	45	45	45	45	45	45
Empfohlene Fördermenge - Caudal requerido	MPa	29	29	28	27	26,5	28	28	27
PRESSIONE MASSIMA - Rated pressure - Pression maxi - Betriebsdruck - Presión máxima	l	120	120	120	120	120	120	120	120
CAPACITÀ DEL SERBATOIO - Tank capacity - Capacité du réservoir - Tankinhalt									
Capacidad del depósito de aceite									
<b>GRUPPO DI ROTAZIONE - Slewing system - Rotation - Schwenksystem - Sistema de giro</b>									
ANGOLO DI ROTAZIONE - Slewing angle - Angle de rotation - Schwenkbereich - Angulo de giro	°	408	408	408	408	408	408	408	408
COPPIA DI ROTAZIONE - Slewing moment - Couple de rotation - Schwenkmoment - Momento de giro	kNm	30	30	30	30	30	30	30	30
PENDENZA MASSIMA DI LAVORO - Max. working heel - Devers maxi de travail - Max. Arbeitsneigung - Inclinación máxima de trabajo	% (°)	8,7(5)	8,7(5)	8,7(5)	8,7(5)	8,7(5)	0	0	0
<b>PESO GRU STANDARD - Standard crane weight - Poids de la grue standard</b> <i>Eigengewicht - Peso de la grúa est</i>	Kg	2320	2400	2510	2630	2740	3010	3080	3130
IN VERSIONE LC - LC Version		--	2500	2610	2730	--	--	--	--



**TECHNICAL DATA**

20021 20022 20023 20024 20025 20023 +J52 20023 +J53 20024 +J52 20024 +J53

<b>MAXIMUM LIFTING MOMENT</b>	ft Lbs	141770	138880	130200	120790	117180	--	--	--
<b>MAXIMUM HYDRAULIC REACH</b>									
HORIZONTAL	ft	20'10"	26'9"	32'11"	39'1"	45'11"	52'2"	58'3"	63'8"
VERTICAL	ft	32'6"	38'1"	43'11"	50'6"	57'1"	62'8"	68'7"	75'
<b>MAXIMUM REACH WITH MANUAL EXTENSIONS</b>									
HORIZONTAL	ft	--	--	--	63'10"	64'2"	70'6"	70'6"	76'1"
VERTICAL	ft	--	--	--	75'2"	75'6"	80'5"	80'5"	86'7"
<b>HYDRAULIC SYSTEM</b>									
RECOMMENDED OIL FLOW	gals/min (USA)	12	12	12	12	12	12	12	12
RATED PRESSURE	psi	4205	4205	4060	3915	3840	4060	4060	3915
TANK CAPACITY	gals (USA)	32	32	32	32	32	32	32	32
<b>SLEWING SYSTEM</b>									
SLEWING ANGLE	°	408	408	408	408	408	408	408	408
SLEWING MOMENT	ft lbs	21700	21700	21700	21700	21700	21700	21700	21700
MAX. WORKING HELL	% (°)	8,7(5)	8,7(5)	8,7(5)	8,7(5)	8,7(5)	0	0	0
<b>STANDARD CRANE WEIGHT</b>	lbs	5110	5290	5530	5800	6040	6640	6790	7050
LC VERSION	lbs	--	5510	5750	6020	--	--	--	--