

Since 1959



Cranes, in all the languages of the world

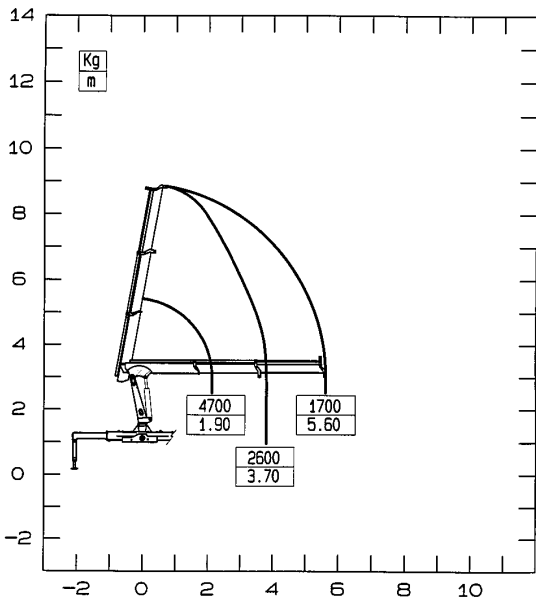
Serie 10 - Serie 14

Lift Away

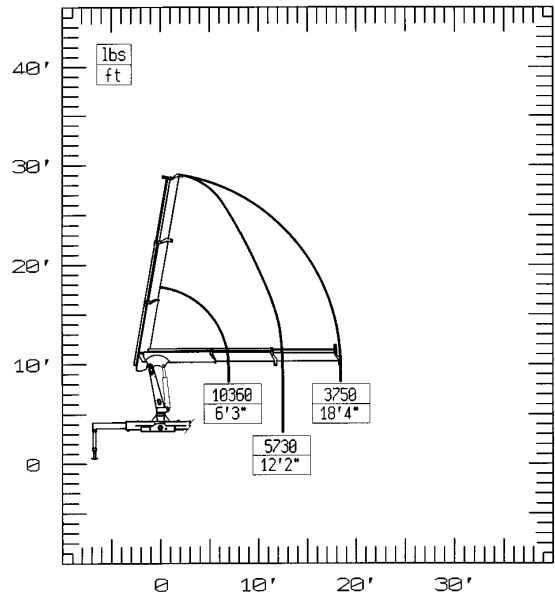


LA FORZA DELLA QUALITÀ THE POWER OF QUALITY
LA FORCE DE LA QUALITE DIE KRAFT DER QUALITÄT LA FUERZA DE LA CALIDAD

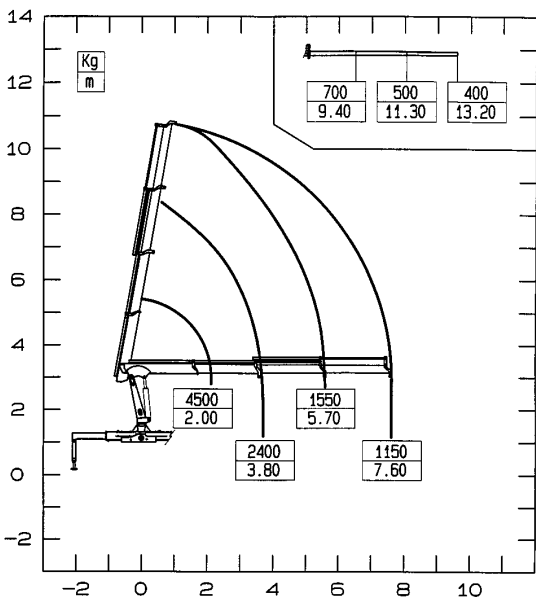
10012



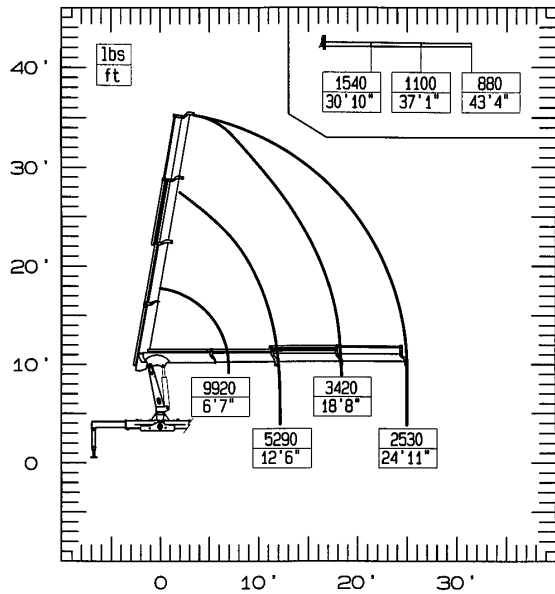
10012

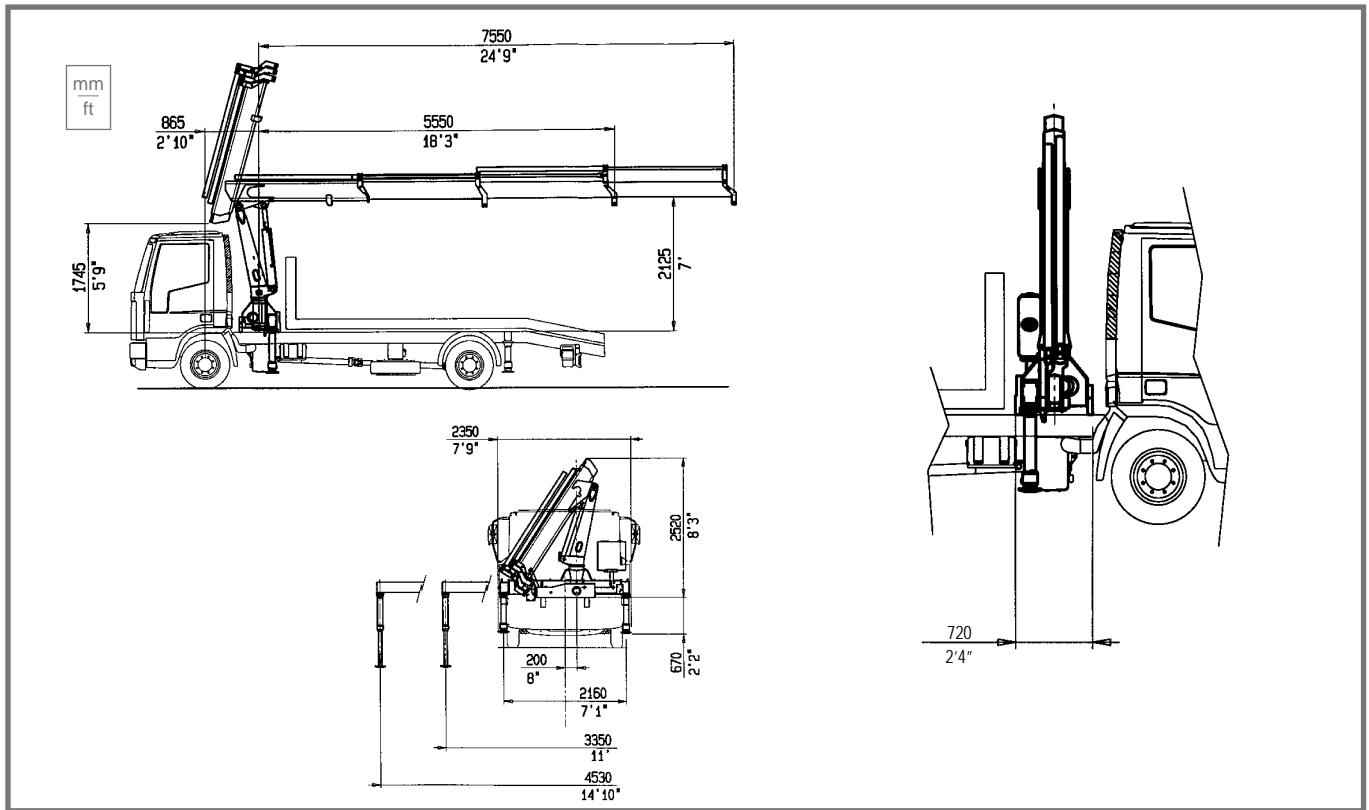


10013



10013





DATI TECNICI - TECHNICAL DATA - DONNÉES TECHNIQUES - TECHNISCHE DATEN - DATOS TECNICOS

10012 10013

MOMENTO DI SOLLEVAMENTO MASSIMO - Maximum lifting moment - Moment de levage maxi - Max. Lastmoment - Momento de elevación máxima	kNm	94,4	89,5
	tm	9,6	9,1
SBRACCIO OLEODINAMICO - Maximum hydraulic reach - Allongement hydraulique - Hydraulische Reichweite, Standard - Alcance hidráulico			
ORIZZONTALE - Horizontal - Horizontal - Horizontal - Horizontal	m	5,60	7,60
VERTICALE - Vertical - Vertical - Vertikal - Vertical	m	8,90	10,80
SBRACCIO CON PROLUNGHE - Maximum reach with manual extensions - Allongement avec rallonges manuelles - Reichweite mit mech. Verlängerungen			
Alcance con prolongas manuales			
ORIZZONTALE - Horizontal - Horizontal - Horizontal - Horizontal	m	--	13,20
VERTICALE - Vertical - Vertical - Vertikal - Vertical	m	--	16,20
IMPIANTO OLEODINAMICO - Hydraulic system - Circuit hydraulique - Hydraulikanlage - Sistema hidráulico			
PORTATA RACCOMANDATA - Recommended oil flow - Débit recommandé - Empfohlene Fördermenge - Caudal requerido	l/min	30	30
PRESSIONE MASSIMA - Rated pressure - Pression maxi - Betriebsdruck - Presión máxima	MPa	26	25
CAPACITÀ DEL SERBATOIO - Tank capacity - Capacité du réservoir - Tankinhalt - Capacidad del depósito de aceite	l	45	45
GRUPPO DI ROTAZIONE - Slewing system - Rotation - Schwenksystem - Sistema de giro			
ANGOLO DI ROTAZIONE - Slewing angle - Angle de rotation - Schwenkbereich - Ángulo de giro	°	200	200
COPPIA DI ROTAZIONE - Slewing moment - Couple de rotation - Schwenkmoment - Momento de giro	kNm	17,6	17,6
PENDENZA MASSIMA DI LAVORO - Max. working heel - Devers maxi de travail - Max. Arbeitsneigung - Inclinación máxima de trabajo	% (°)	8,7(5)	8,7(5)
PESO GRU STANDARD - Standard crane weight - Poids de la grue standard - Eigengewicht Standardkran - Peso de la grúa est	Kg	1120	1230
CON SERBATOIO NON RIFORNITO - Empty oil tank - Reservoir huile non garni - Oeltank leer - Deposito de aceite vacío			



TECHNICAL DATA

10012 10013

MAXIMUM LIFTING MOMENT	ft lbs	68280	64740
MAXIMUM HYDRAULIC REACH			
HORIZONTAL	ft	18'4"	24'11"
VERTICAL	ft	29'2"	35'5"
MAXIMUM REACH WITH MANUAL EXTENSIONS			
HORIZONTAL	ft	--	43'4"
VERTICAL	ft	--	53'2"
HYDRAULIC SYSTEM			
RECOMMENDED OIL FLOW	gals/min (USA)	8	8
RATED PRESSURE	psi	3780	3630
TANK CAPACITY	gals (USA)	12	12
SLEWING SYSTEM			
SLEWING ANGLE	°	200	200
SLEWING MOMENT	ft lbs	12730	12730
MAX. WORKING HELL	% (°)	8,7(5)	8,7(5)
STANDARD CRANE WEIGHT	lbs	2470	2710
Empty oil tank			



TUTTE LE GRU PM SONO COPERTE DA POLIZZA ASSICURATIVA INTERNAZIONALE PER LA RESPONSABILITÀ CIVILE VERSO TERZI
ALL PM CRANES ARE COVERED BY AN INTERNATIONAL INSURANCE POLICY FOR CIVIL LIABILITY THIRD PARTY
TOUTES LES GRUES SONT COUVERTES PAR UNE POLICE D'ASSURANCE INTERNATIONALE DE RESPONSABILITÉ CIVILE ENVERS TIERS
PM-KRANE SIND DURCH EINE INTERNATIONALE HAFTPFLICHTVERSICHERUNG GEGEN DRITTE ABGESICHERT
TODAS LAS GRUAS PM CUENTAN CON UNA PÓLIZA DE SEGUROS INTERNACIONAL CONTRA LAS RESPONSABILIDADES CIVILES HACIA TERCEROS

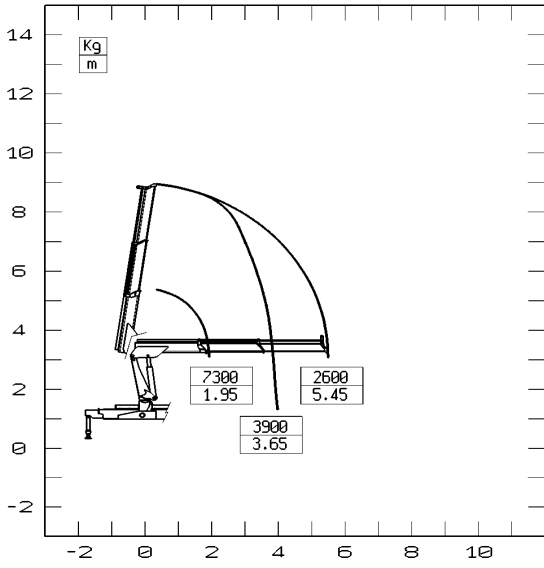




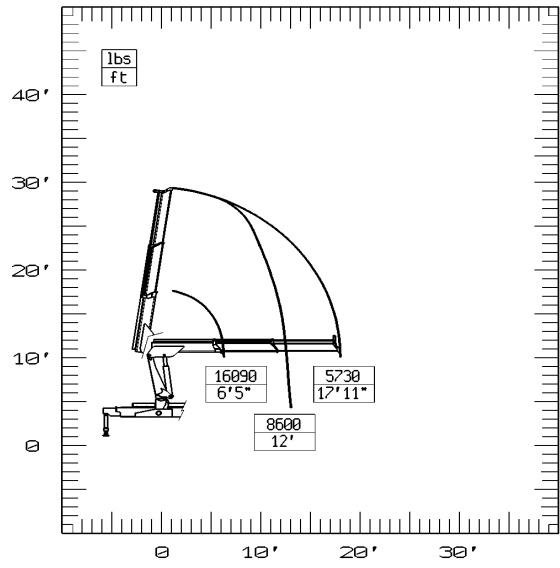
- I dati tecnici possono essere aggiornati senza preavviso
 - *Technical data can be revised without prior notice*
- Les données techniques peuvent être modifiées sans préavis
 - *Technische Änderungen vorbehalten*
 - Reservado el derecho de modificaciones



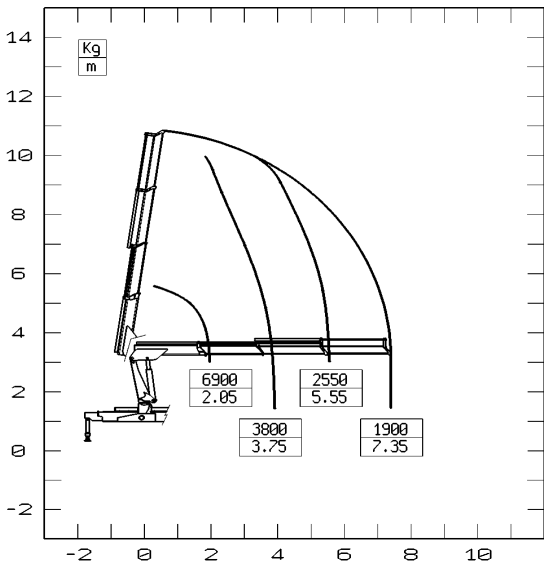
14012



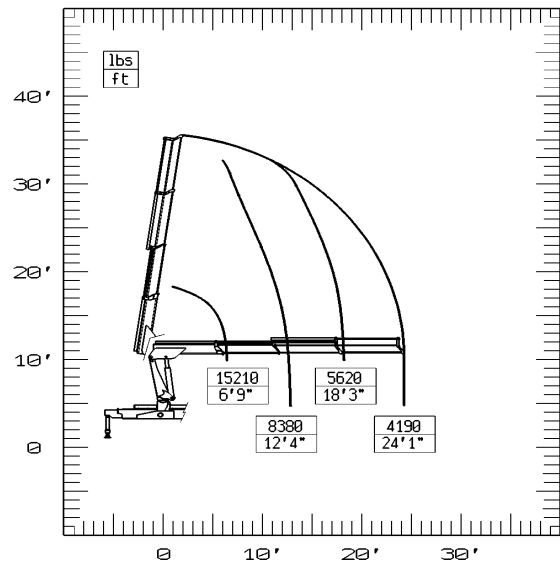
14012



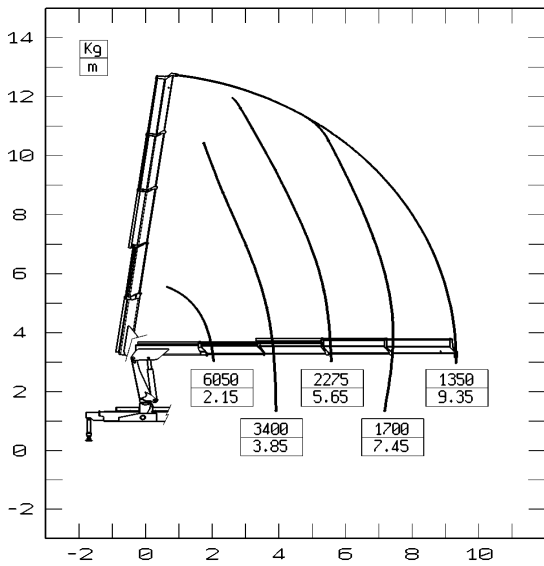
14013



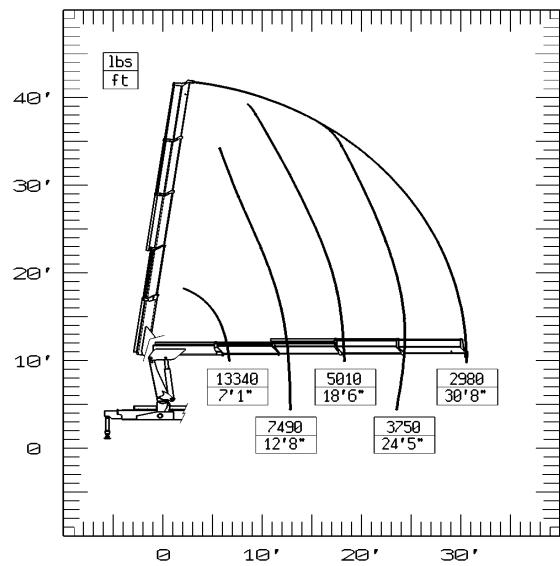
14013

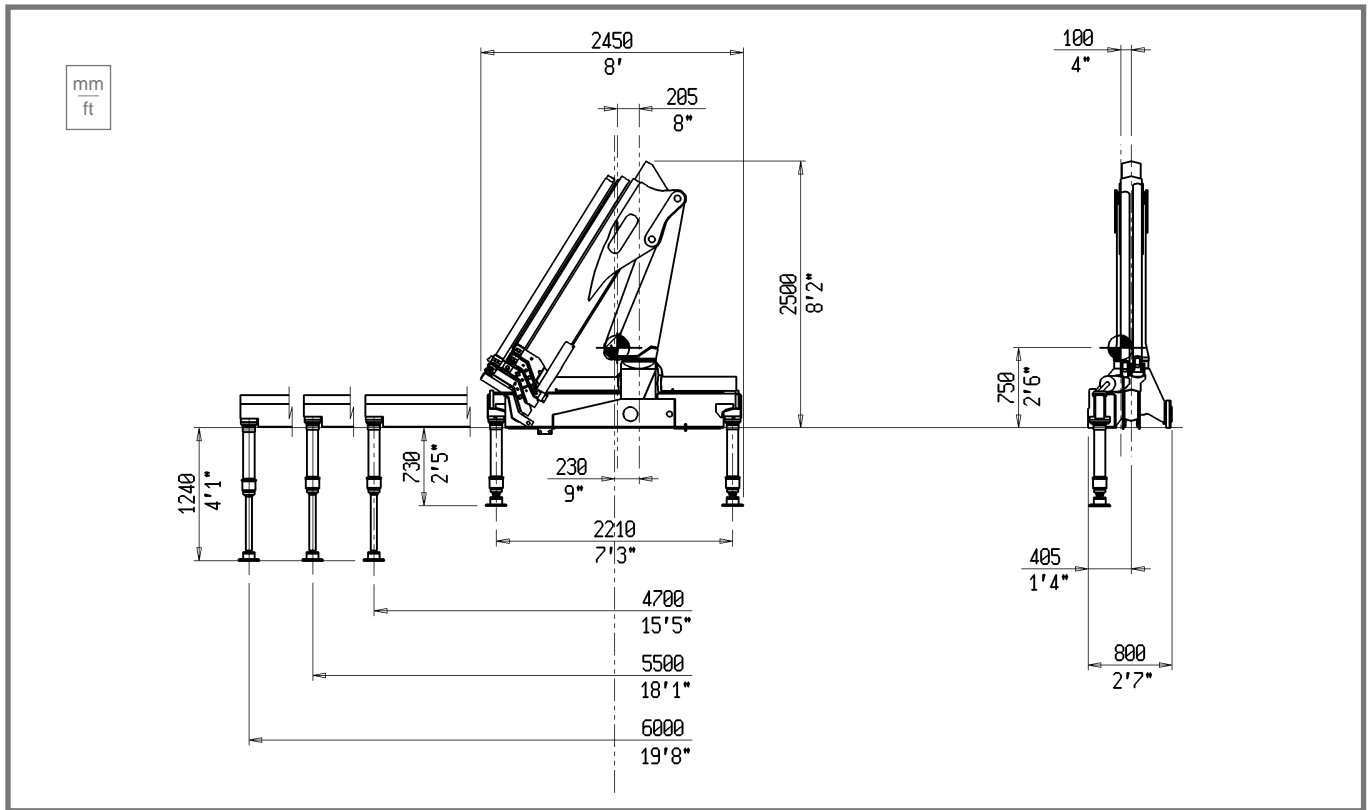


14014



14014





DATI TECNICI - TECHNICAL DATA - DONNÉES TECHNIQUES - TECHNISCHE DATEN - DATOS TECNICOS

		14012	14013	14014
MOMENTO DI SOLLEVAMENTO MASSIMO - Maximum lifting moment - Moment de levage maxi - Max. Lastmoment - Momento de elevación máxima	kNm	140,2	138,3	128,5
	tm	14,3	14,1	13,1
SBRACCIO OLEODINAMICO - Maximum hydraulic reach - Allongement hydraulique - Hydraulische Reichweite, Standard - Alcance hidráulico ORIZZONTALE - Horizontal - Horizontal - Horizontal - Horizontal	m	5,45	7,35	9,35
	VERTICALE - Vertical - Vertical - Vertikal - Vertical	m	8,95	10,85
SBRACCIO CON PROLUNGHE - Maximum reach with manual extensions - Allongement avec rallonges manuelles - Reichweite mit mech. Verlaengerungen - Alcance con prolongas manuales	ORIZZONTALE - Horizontal - Horizontal - Horizontal - Horizontal	m	--	--
	VERTICALE - Vertical - Vertical - Vertikal - Vertical	m	--	--
IMPIANTO OLEODINAMICO - Hydraulic system - Circuit hydraulique - Hydraulikanlage - Sistema hidráulico PORTATA RACCOMANDATA - Recommended oil flow - Débit recommandé - Empfohlene Fördermenge - Caudal requerido	l/min	40	40	40
	PRESSIONE MASSIMA - Rated pressure - Pression maxi - Betriebsdruck - Presión máxima	MPa	27	27
CAPACITÀ DEL SERBATOIO - Tank capacity - Capacité du réservoir - Tankinhalt - Capacidad del depósito de aceite	l	120	120	120
GRUPPO DI ROTAZIONE - Slewing system - Rotation - Schwenksystem - Sistema de giro				
ANGOLO DI ROTAZIONE - Slewing angle - Angle de rotation - Schwenkbereich - Ángulo de giro	°	400	400	400
COPPIA DI ROTAZIONE - Slewing moment - Couple de rotation - Schwenkmoment - Momento de giro	kNm	17	17	17
PENDENZA MASSIMA DI LAVORO - Max. working heel - Devers maxi de travail - Max. Arbeitsneigung - Inclinación máxima de trabajo	% (°)	8,7(5)	8,7(5)	8,7(5)
PESO GRU STANDARD - Standard crane weight - Poids de la grue standard - Eigengewicht Standardkran - Peso de la grúa est CON SERBATOIO NON RIFORNITO - Empty oil tank - Reservoir huile non garni - Oeltank leer - Deposito de aceite vacío	Kg	1690	1800	1920



TECHNICAL DATA

		14012	14013	14013
MAXIMUM LIFTING MOMENT	ft lbs	103430	101990	94750
MAXIMUM HYDRAULIC REACH	HORIZONTAL	ft	17'11"	24'1"
	VERTICAL	ft	29'4"	35'7"
MAXIMUM REACH WITH MANUAL EXTENSIONS	HORIZONTAL	ft	--	--
	VERTICAL	ft	--	--
HYDRAULIC SYSTEM	RECOMMENDED OIL FLOW	gals/min (USA)	11	11
	RATED PRESSURE	psi	3920	3920
	TANK CAPACITY	gals (USA)	32	32
SLEWING SYSTEM	SLEWING ANGLE	°	400	400
	SLEWING MOMENT	ft lbs	12300	12300
	MAX. WORKING HELL	% (°)	8,7(5)	8,7(5)
STANDARD CRANE WEIGHT	lbs	3725	3970	4230
Empty oil tank				

CRANES, IN ALL THE LANGUAGES OF THE WORLD

ARGENTINA
AUSTRALIA
BELGIUM
BRAZIL
CANADA
CHILE
COLOMBIA
CZECH REP
CYPRUS
DENMARK
EGYPT
EAST/NORTH EUROPE
EIRE
FINLAND
FRANCE
GERMANY
GREECE
HOLLAND
HONG KONG
INDONESIA
ITALY
JORDAN
MALAYSIA
MOROCCO
NORWAY
OCEANIA
NETHERLANDS
PERU
PHILIPPINES
POLAND
PORTUGAL
P.R.C.
QUATAR
ROMANIA
SAUDI ARABIA
SINGAPORE
SPAIN
SOUTH AFRICA
SOUTH AMERICA
SWITZERLAND
THAILAND
TAIWAN
TOBAGO
TRINIDAD
TUNISIA
TURKEY
UNITED ARAB EMIRATES
USA
UK
VENEZUELA
VIETNAM



Autogru PM spa - via Emilia Est, 1058 - 41100 Modena MO (ITALY)
Tel. +39 059 20.54.711 - Fax +39 059 28.07.47 - Export Fax +39 059 28.25.05
e-mail: autogrupm@autogrupm.com www.autogrupm.com